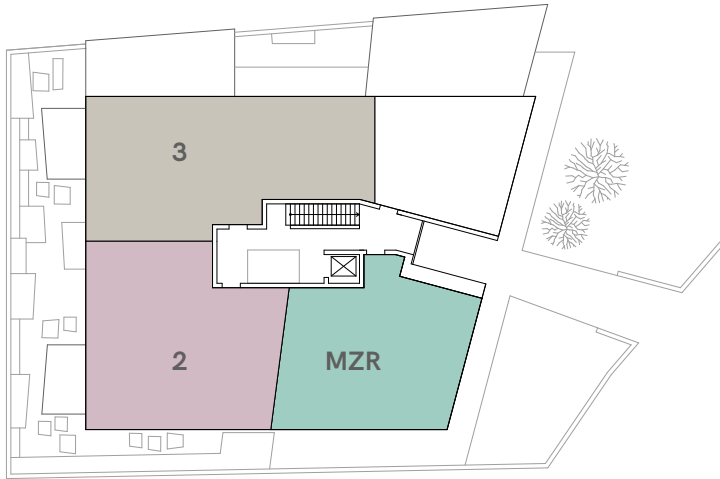


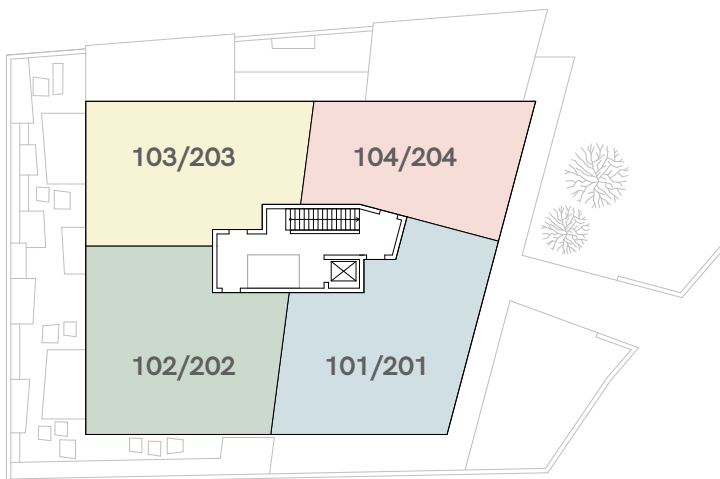
# MFH Neubau

## Kronenweg 3, 8712 Stäfa

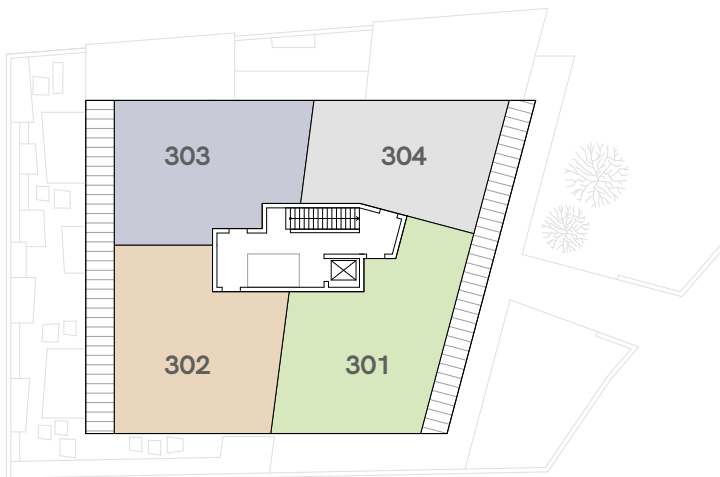
### Wohnungen



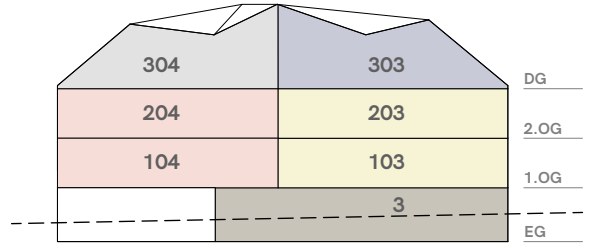
Erdgeschoss



1. + 2. Obergeschoss



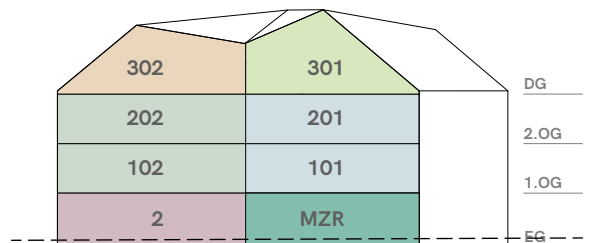
Dachgeschoss



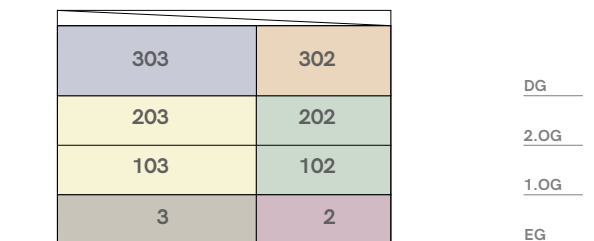
Ansicht Nord



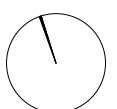
Ansicht Ost



Ansicht Süd



Ansicht West



# MFH Neubau + Umbau / Sanierung Kronenweg 1+3, 8712 Stäfa

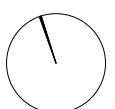
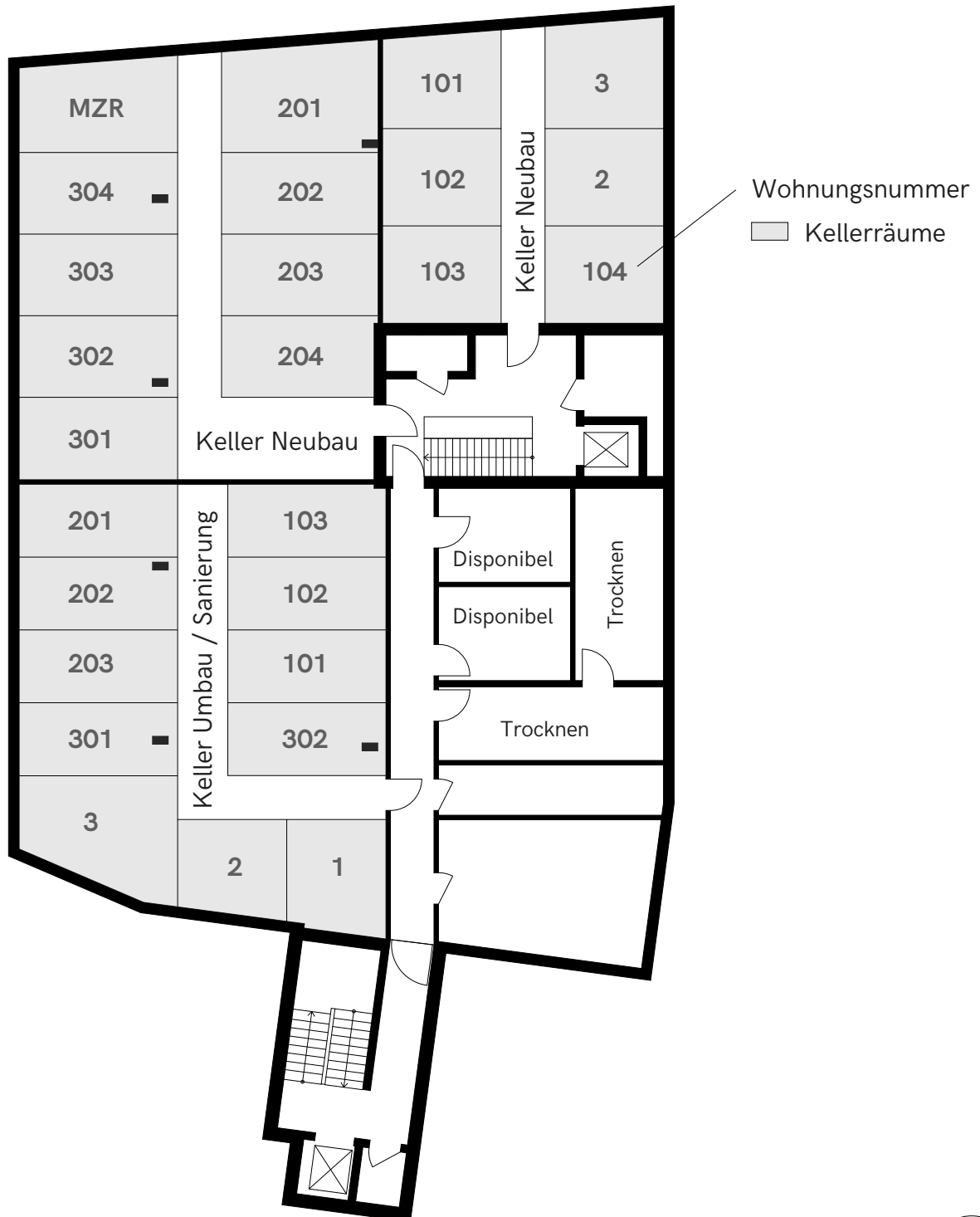
Tiefgarage / Parkplätze  
1.Untergeschoss



# MFH Neubau + Umbau / Sanierung

## Kronenweg 1+3, 8712 Stäfa

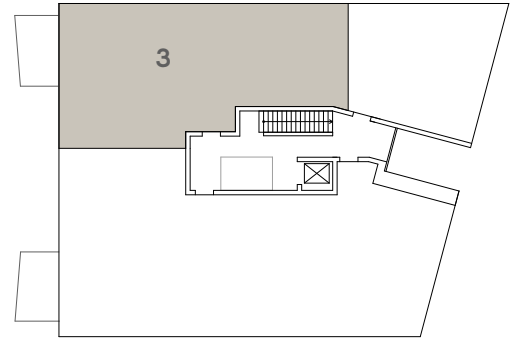
Kellerräume  
2. Untergeschoss



# MFH Neubau

## Kronenweg 3, 8712 Stäfa

Wohnungen Erdgeschoss




EG

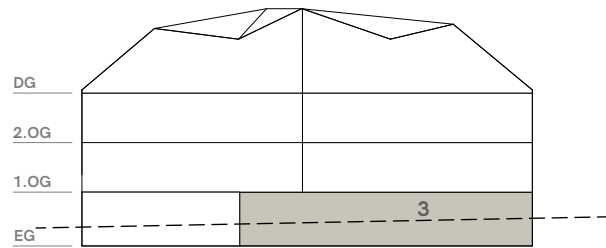
### 3.5 Zi-Whg. 3

Erdgeschoss Nord-West

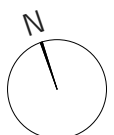
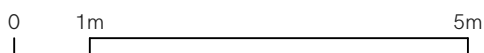
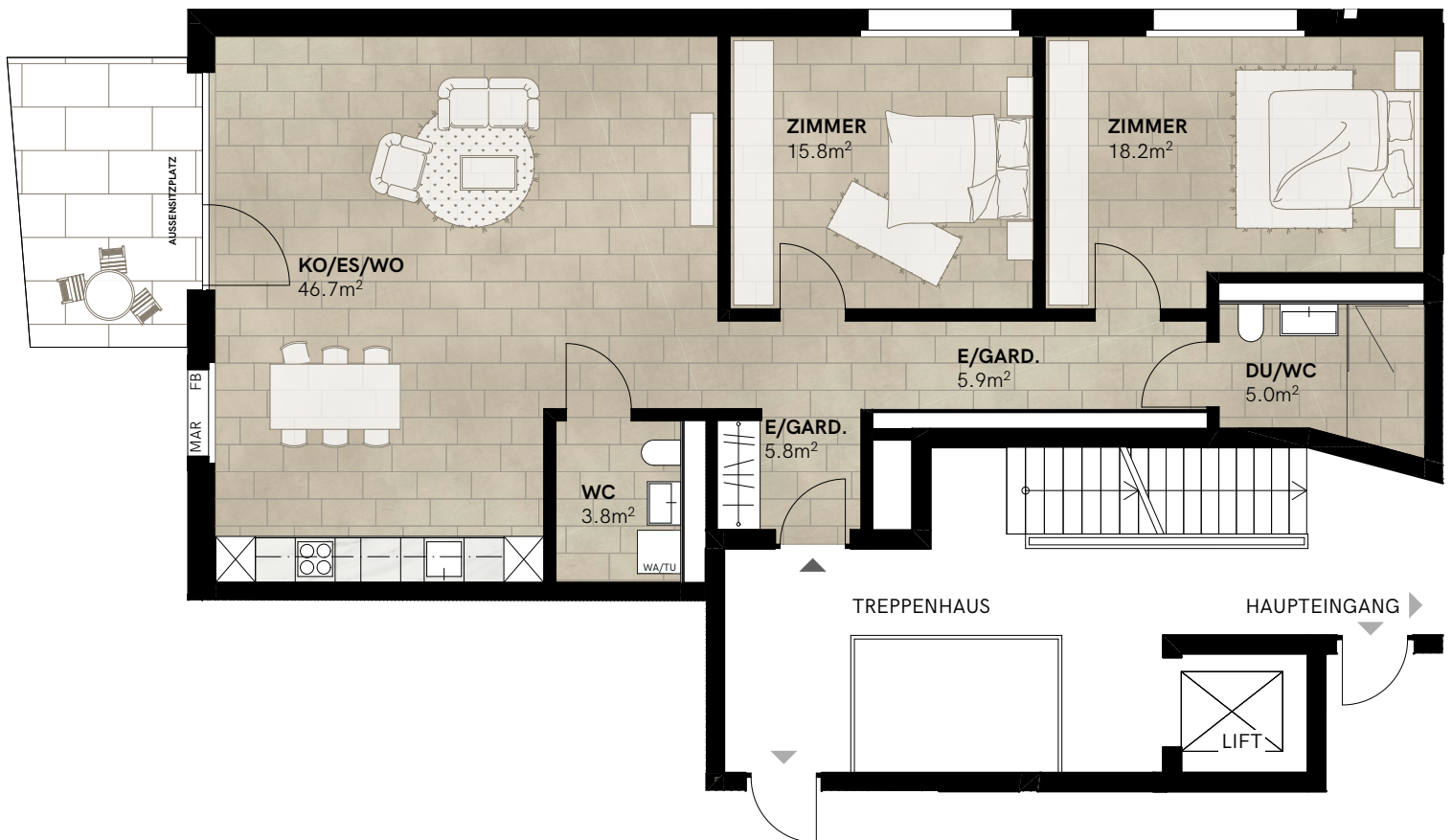
Wohnfläche	101.2m <sup>2</sup>
Sitzplatz	10.0m <sup>2</sup>
Raumhöhe	2.4m
Keller	12.8m <sup>2</sup>

Änderungen vorbehalten

 Möblierung von den Mietern



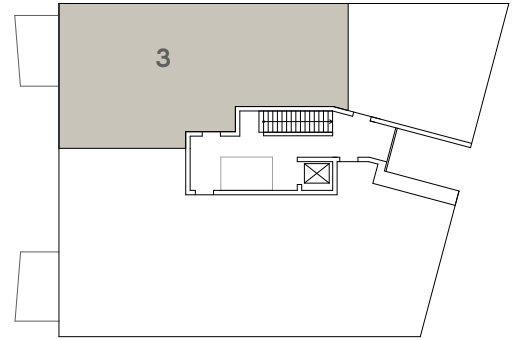
Ansicht Nord



# MFH Neubau

## Kronenweg 3, 8712 Stäfa

Wohnungen Erdgeschoss

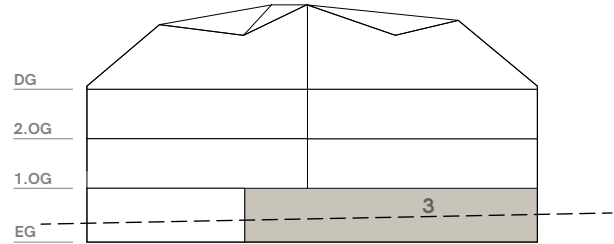


EG

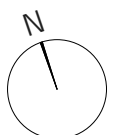
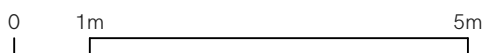
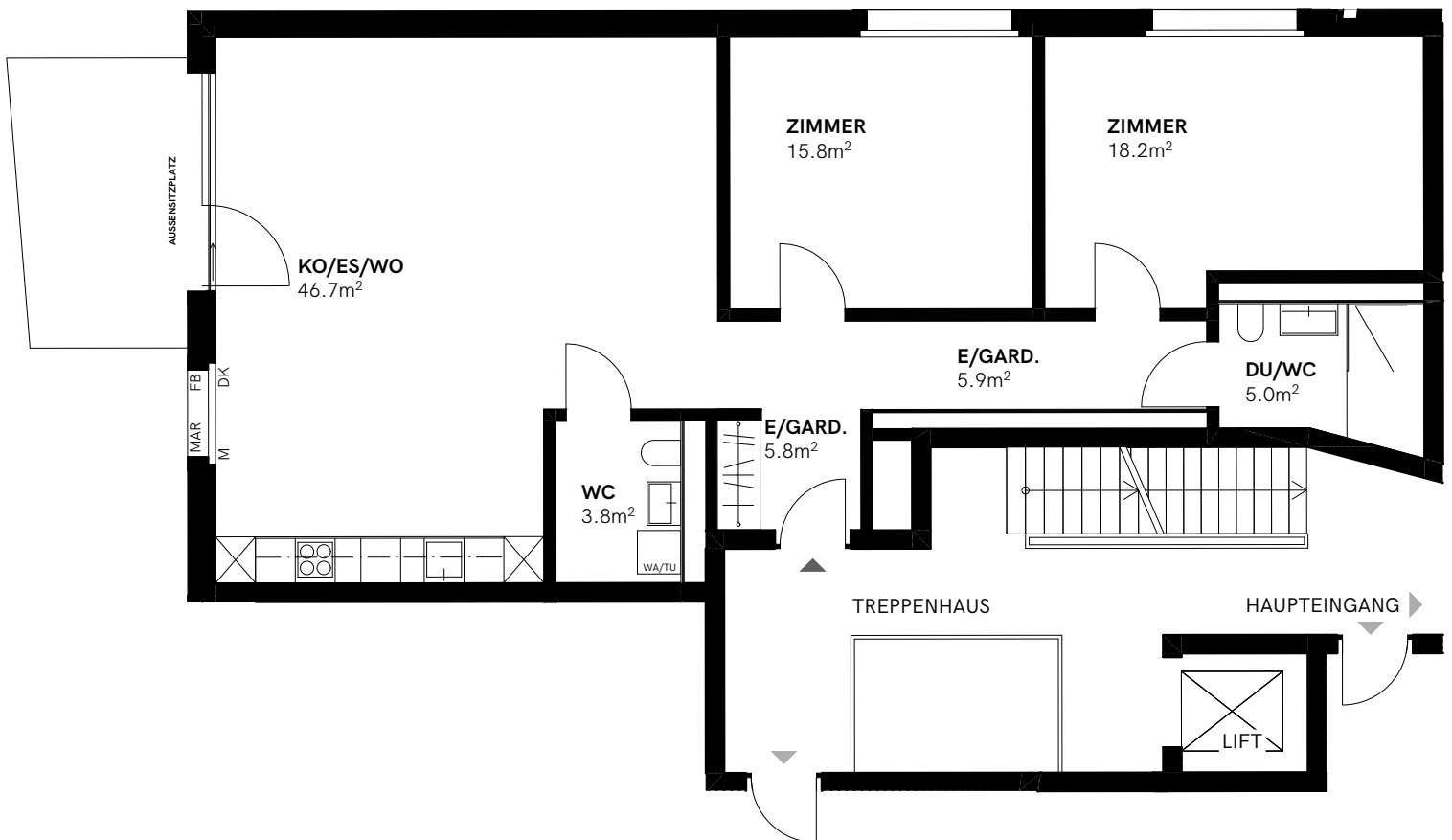
**3.5 Zi-Whg. 3**  
Erdgeschoss Nord-West

Wohnfläche	101.2m <sup>2</sup>
Sitzplatz	10.0m <sup>2</sup>
Raumhöhe	2.4m
Keller	12.8m <sup>2</sup>

Änderungen vorbehalten



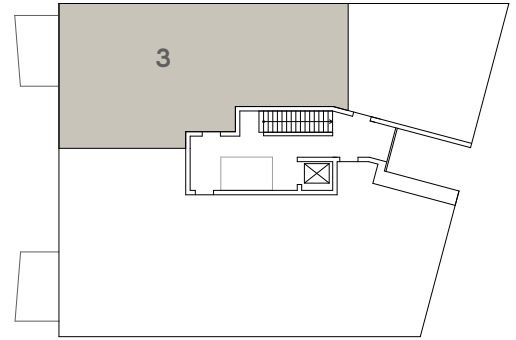
Ansicht Nord



# MFH Neubau

## Kronenweg 3, 8712 Stäfa

Wohnungen Erdgeschoss



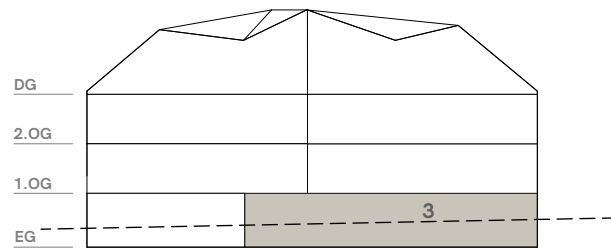
EG

### 3.5 Zi-Whg. 3

Erdgeschoss Nord-West

Wohnfläche	101.2m <sup>2</sup>
Sitzplatz	10.0m <sup>2</sup>
Raumhöhe	2.4m
Keller	12.8m <sup>2</sup>

Änderungen vorbehalten



Ansicht Nord

