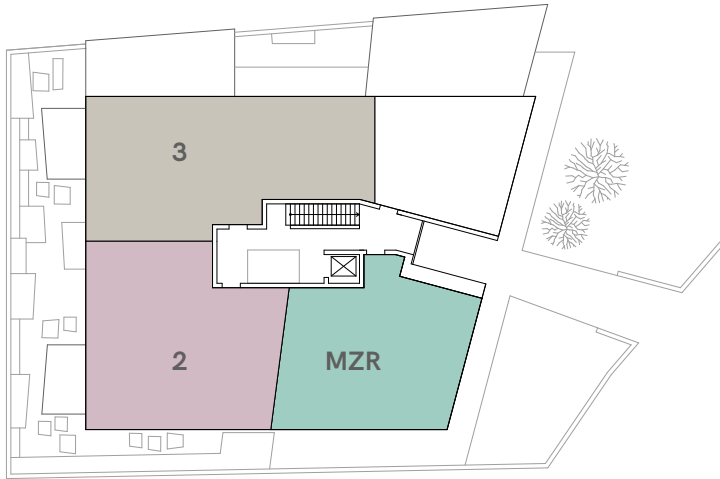


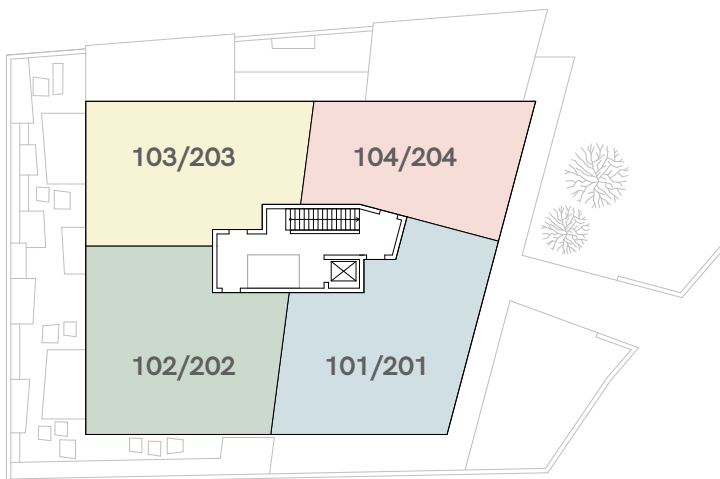
MFH Neubau

Kronenweg 3, 8712 Stäfa

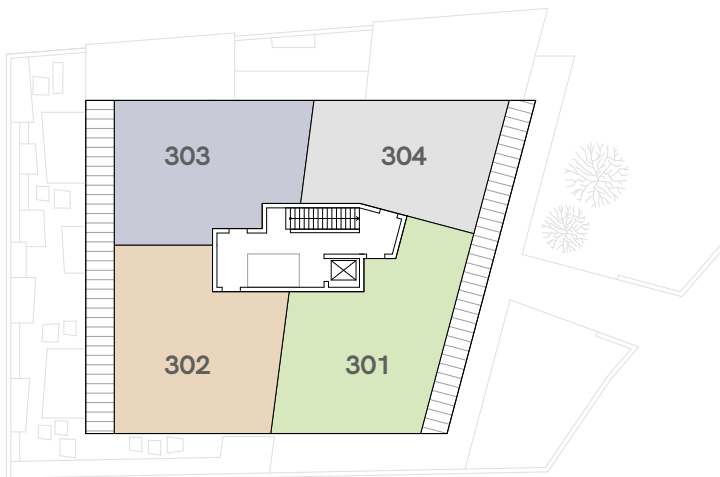
Wohnungen



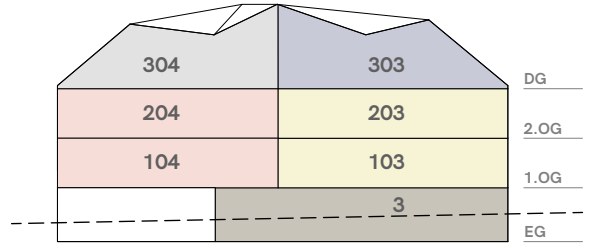
Erdgeschoss



1. + 2. Obergeschoss



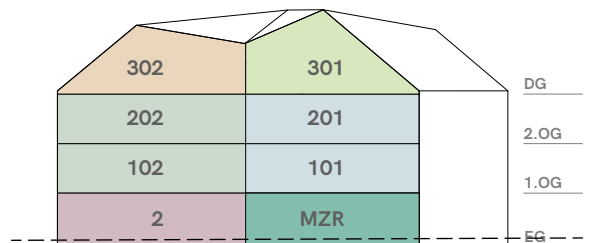
Dachgeschoss



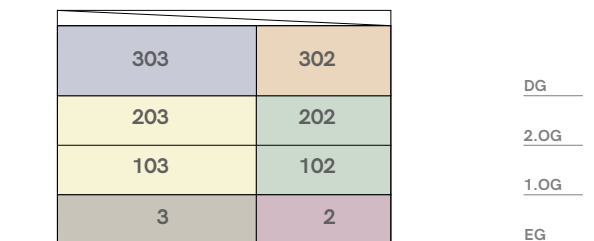
Ansicht Nord



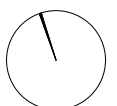
Ansicht Ost



Ansicht Süd



Ansicht West



MFH Neubau + Umbau / Sanierung Kronenweg 1+3, 8712 Stäfa

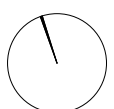
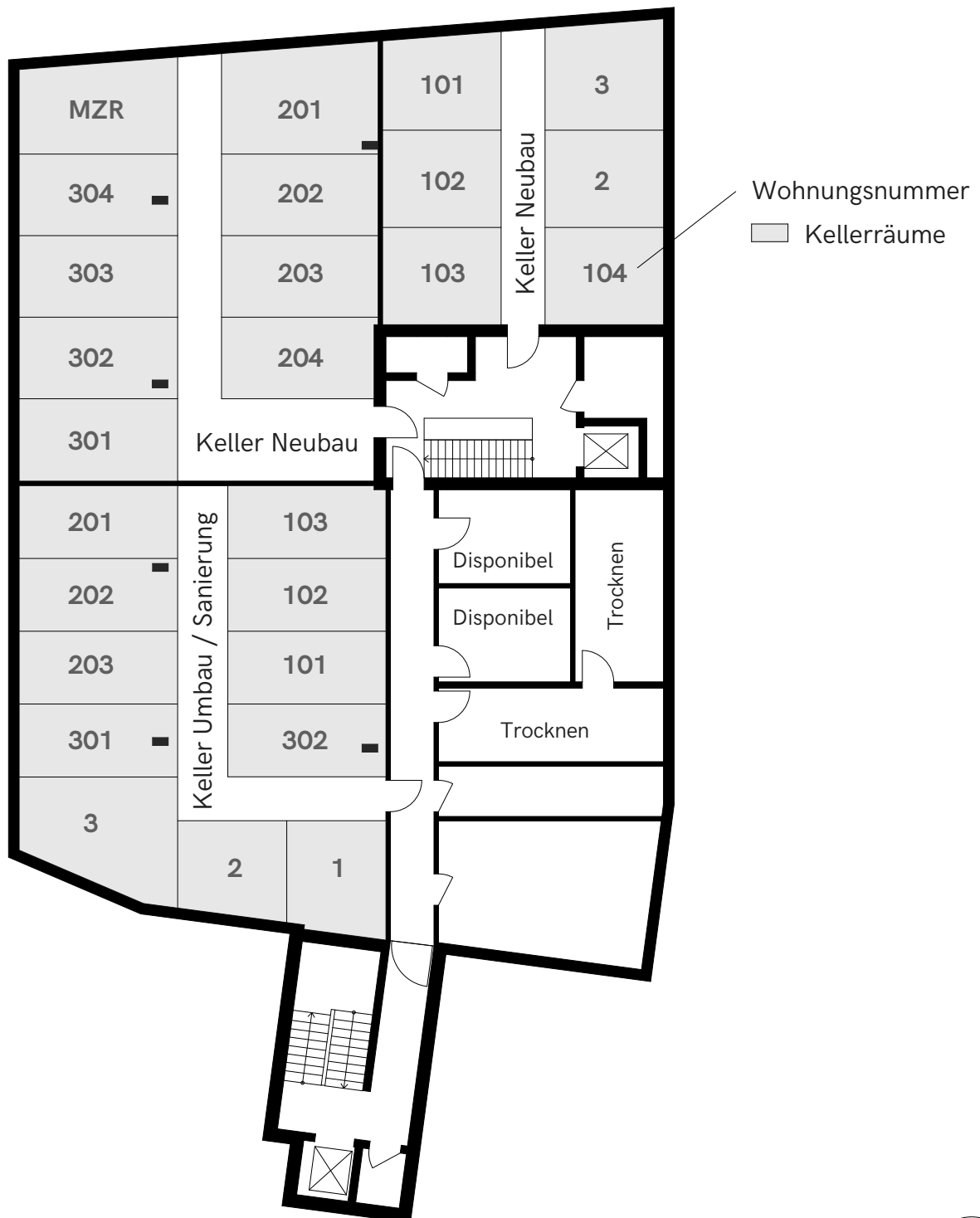
Tiefgarage / Parkplätze
1.Untergeschoss



MFH Neubau + Umbau / Sanierung

Kronenweg 1+3, 8712 Stäfa

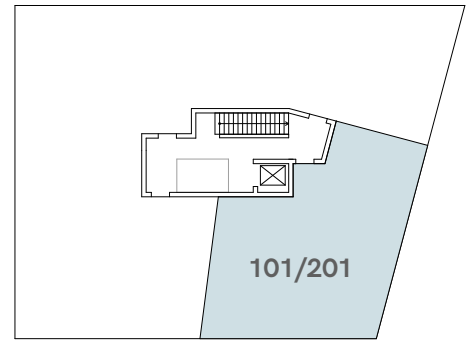
Kellerräume
2. Untergeschoss



MFH Neubau

Kronenweg 3, 8712 Stäfa

Wohnungen 1. + 2.Obergeschoss



1.OG / 2.OG

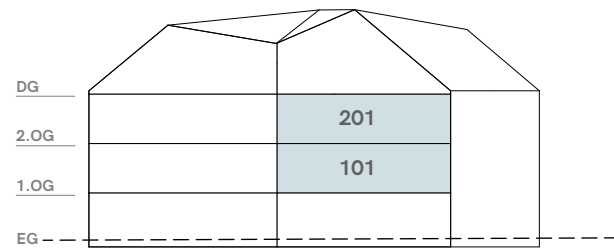
3.5 Zi-Whg. 1

1. + 2.Obergeschoss Süd-Ost

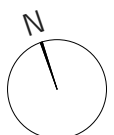
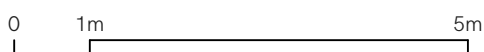
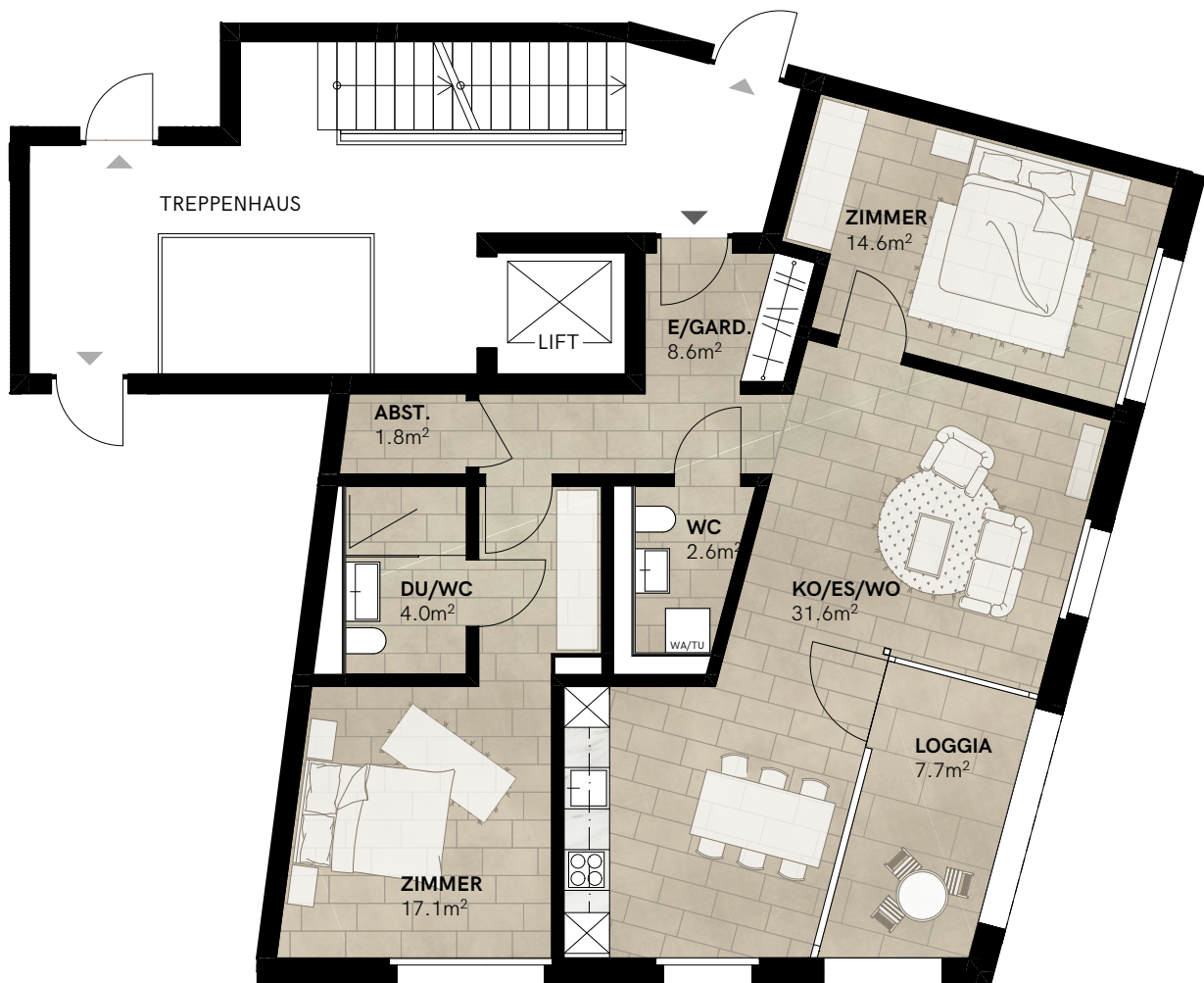
Wohnfläche	80.3m ²
Loggia	7.7m ²
Raumhöhe	2.4m
Keller	11.3m ² /16.96m ²

Änderungen vorbehalten

 Möblierung von den Mietern



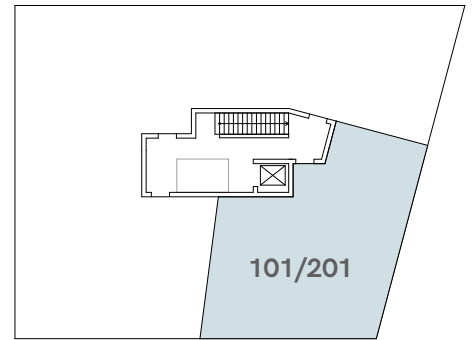
Ansicht Süd



MFH Neubau

Kronenweg 3, 8712 Stäfa

Wohnungen 1. + 2.Obergeschoss

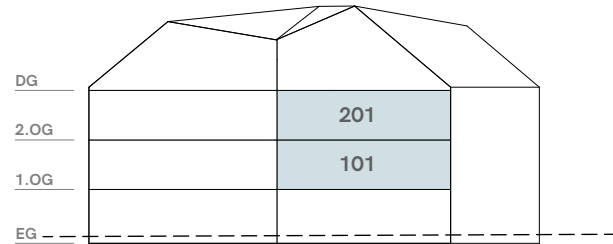


1.OG / 2.OG

3.5 Zi-Whg. 1

1. + 2.Obergeschoss Süd-Ost

Wohnfläche	80.3m ²
Loggia	7.7m ²
Raumhöhe	2.4m
Keller	11.3m ² /16.9m ²



Ansicht Süd

Änderungen vorbehalten

