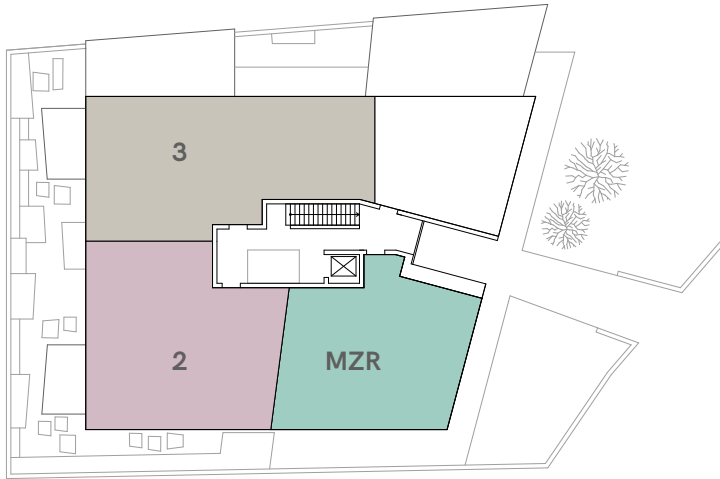


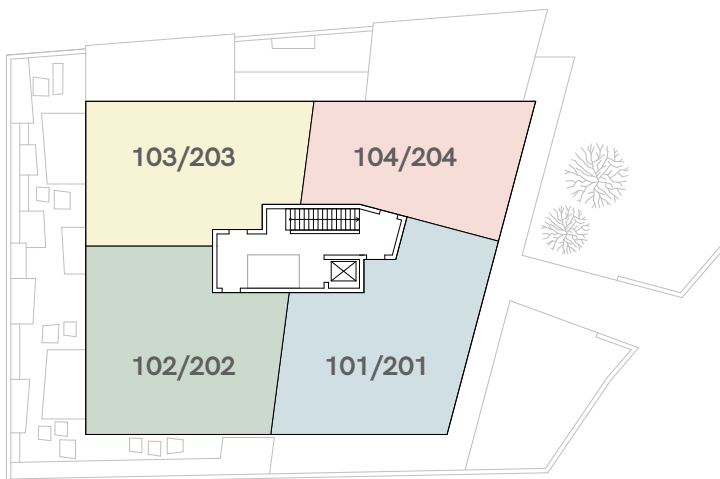
MFH Neubau

Kronenweg 3, 8712 Stäfa

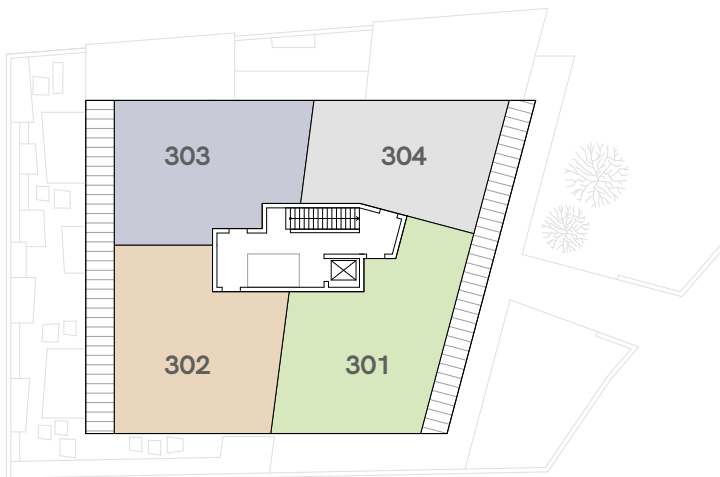
Wohnungen



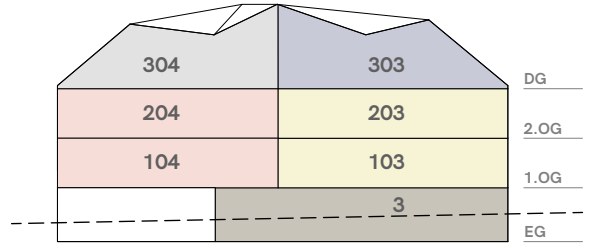
Erdgeschoss



1. + 2. Obergeschoss



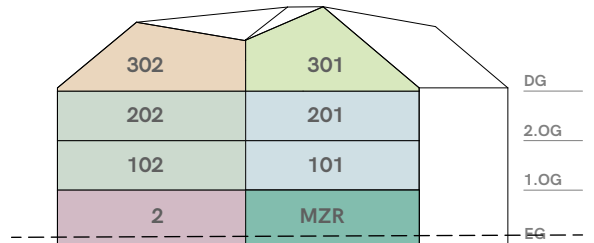
Dachgeschoss



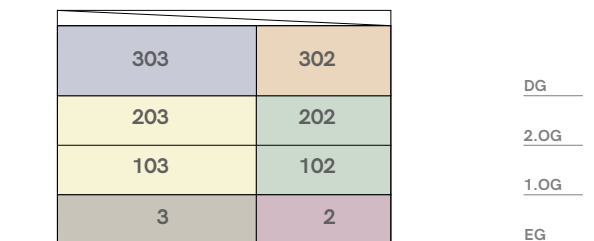
Ansicht Nord



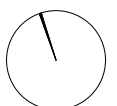
Ansicht Ost



Ansicht Süd



Ansicht West



MFH Neubau + Umbau / Sanierung

Kronenweg 1+3, 8712 Stäfa

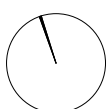
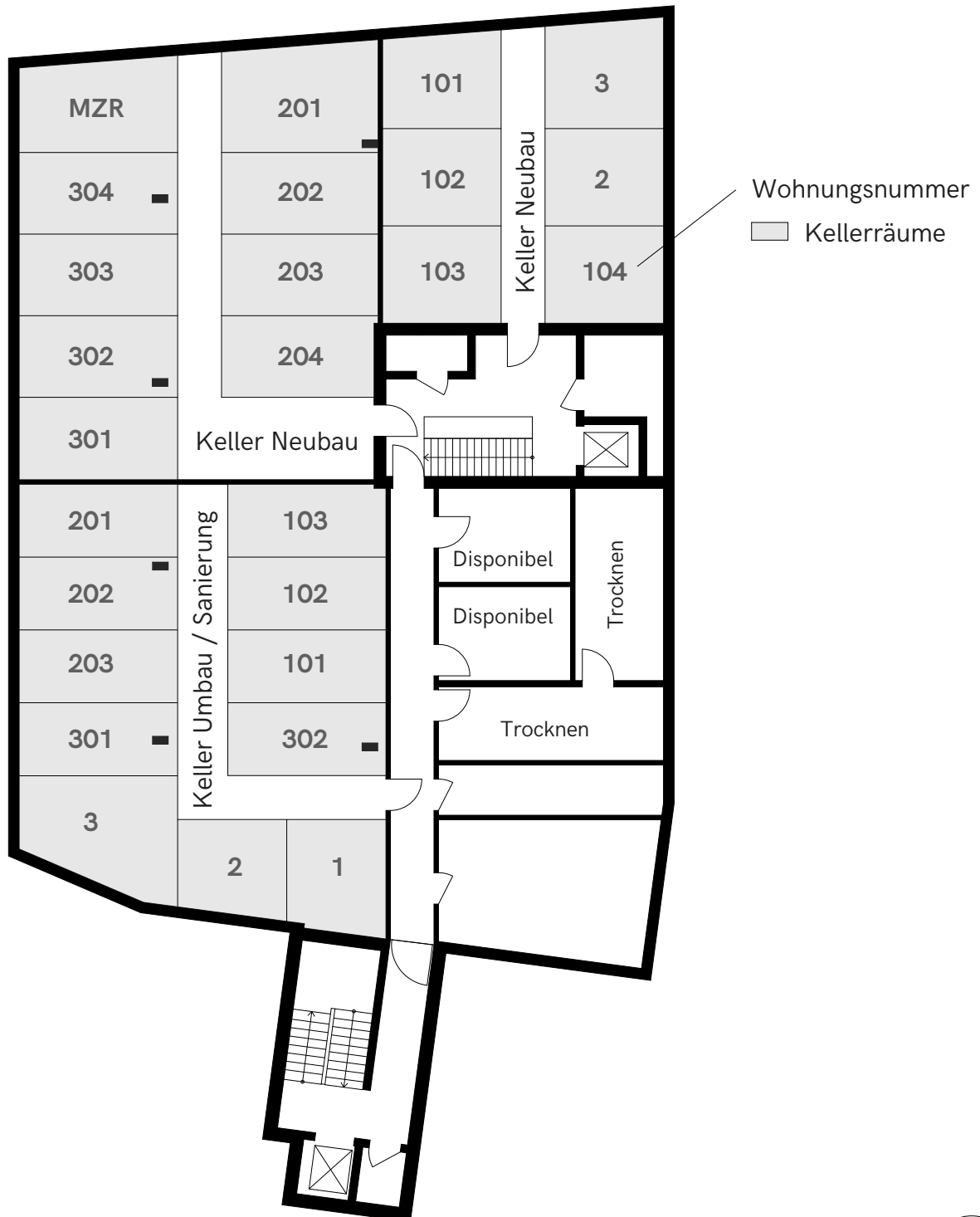
Tiefgarage / Parkplätze
1.Untergeschoss



MFH Neubau + Umbau / Sanierung

Kronenweg 1+3, 8712 Stäfa

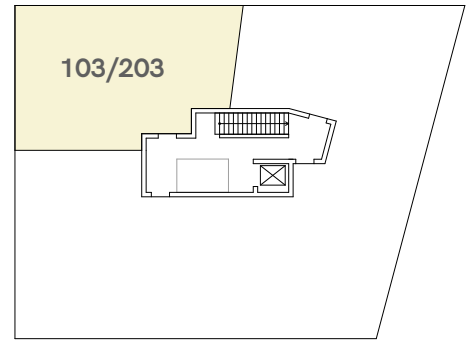
Kellerräume
2. Untergeschoss



MFH Neubau

Kronenweg 3, 8712 Stäfa

Wohnungen 1. + 2.Obergeschoss




1.OG / 2.OG

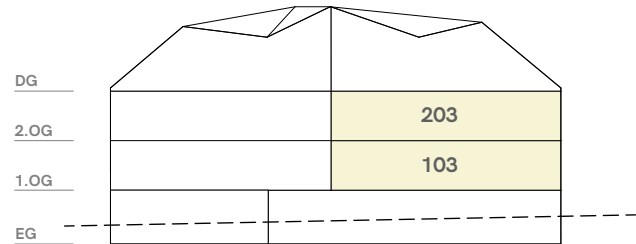
2.5 Zi-Whg. 3

1. + 2.Obergeschoss Nord-West

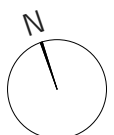
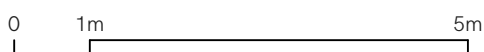
Wohnfläche	70.8m ²
Loggia	7.2m ²
Raumhöhe	2.4m
Keller	11.7m ² /12.9m ²

Änderungen vorbehalten

 Möblierung von den Mietern



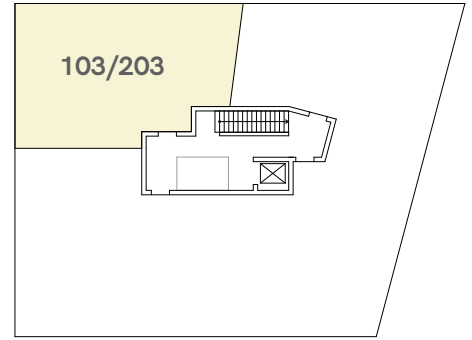
Ansicht Nord



MFH Neubau

Kronenweg 3, 8712 Stäfa

Wohnungen 1. + 2.Obergeschoss



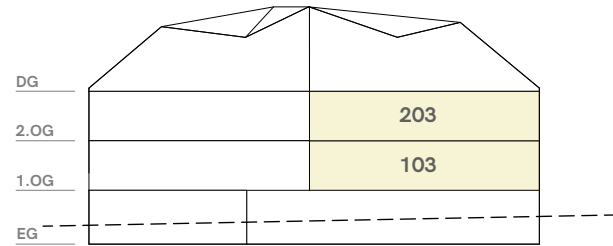
1.OG / 2.OG

2.5 Zi-Whg. 3

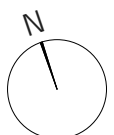
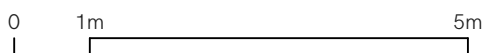
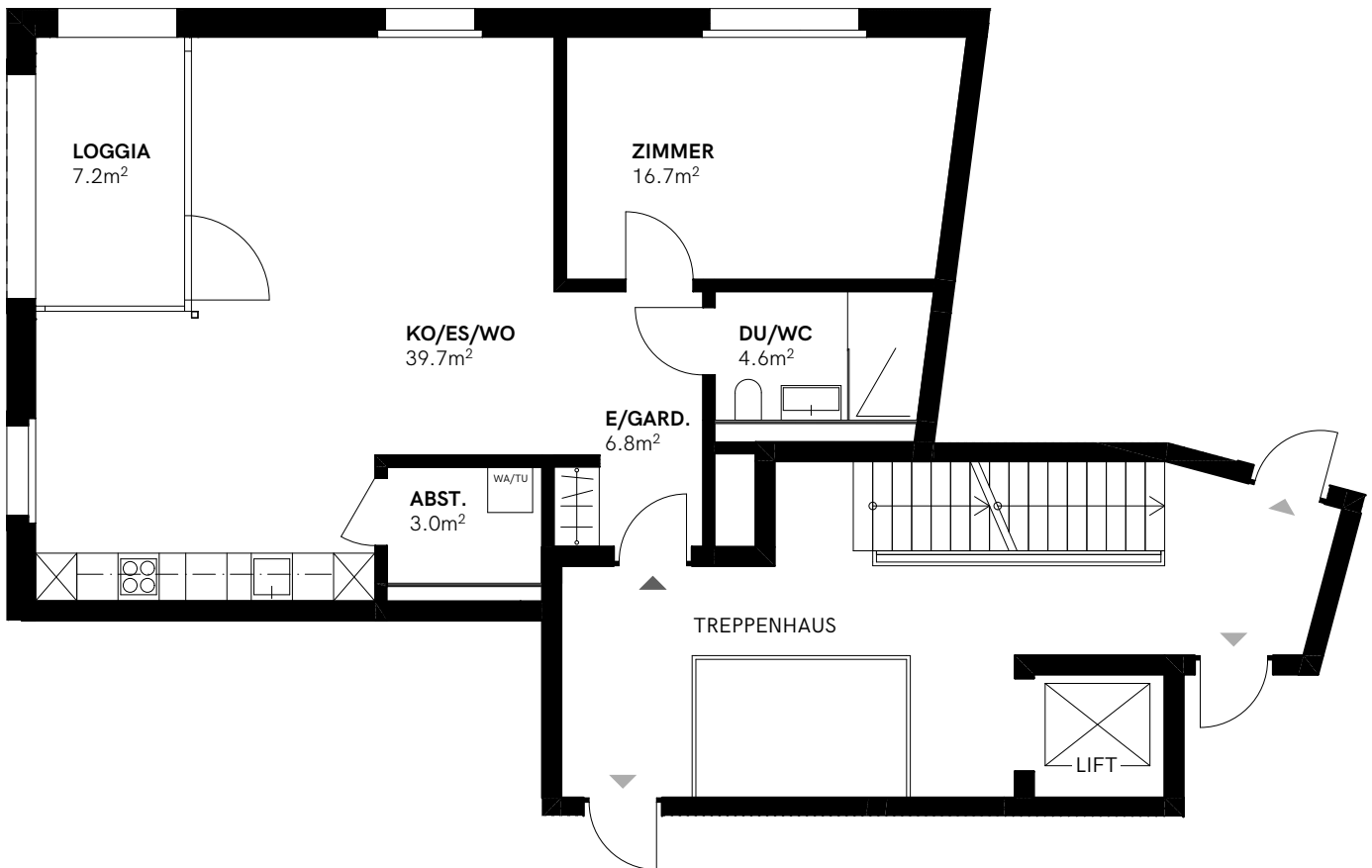
1. + 2.Obergeschoss Nord-West

Wohnfläche	70.8m ²
Loggia	7.2m ²
Raumhöhe	2.4m
Keller	11.7m ² /12.97m ²

Änderungen vorbehalten



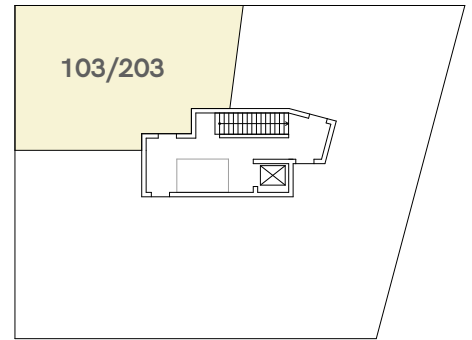
Ansicht Nord



MFH Neubau

Kronenweg 3, 8712 Stäfa

Wohnungen 1. + 2.Obergeschoss



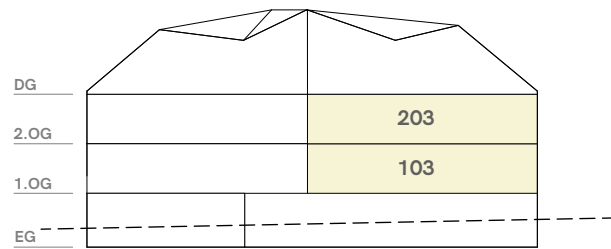
1.OG / 2.OG

2.5 Zi-Whg. 3

1. + 2.Obergeschoss Nord-West

Wohnfläche	70.8m ²
Loggia	7.2m ²
Raumhöhe	2.4m
Keller	11.7m ² /12.9m ²

Änderungen vorbehalten



Ansicht Nord

