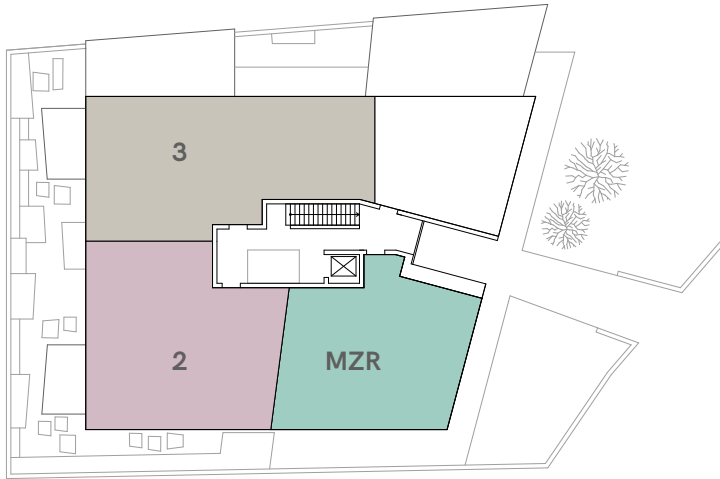


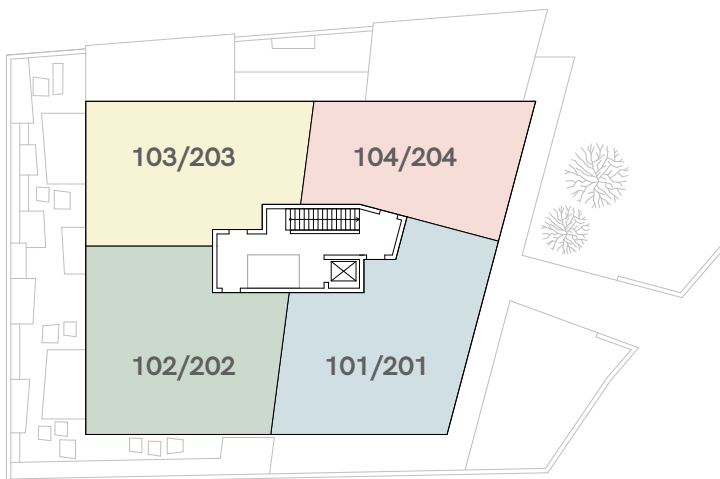
MFH Neubau

Kronenweg 3, 8712 Stäfa

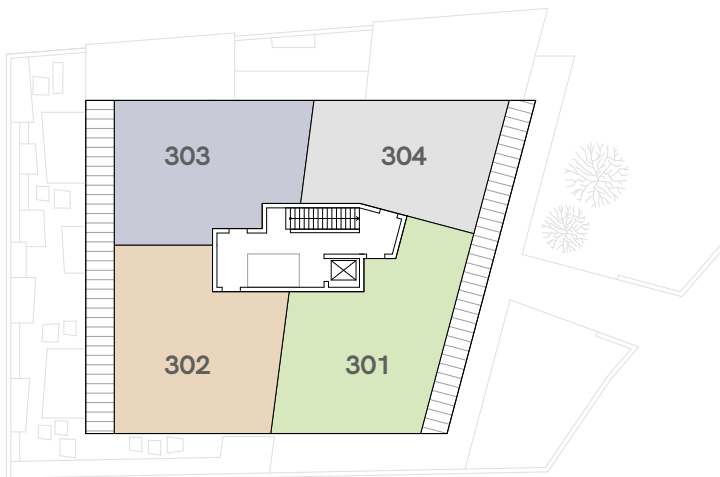
Wohnungen



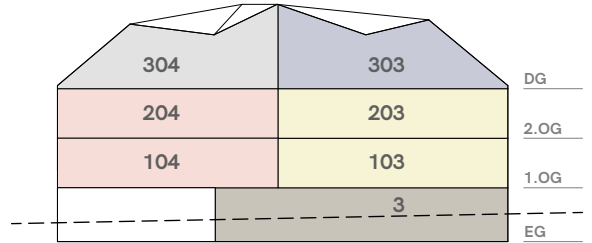
Erdgeschoss



1. + 2. Obergeschoss



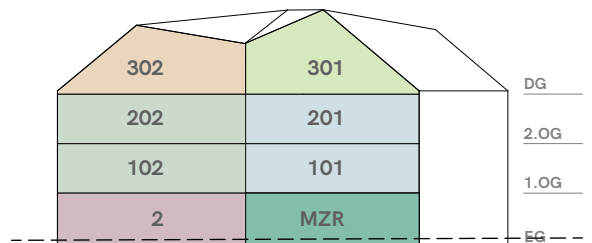
Dachgeschoss



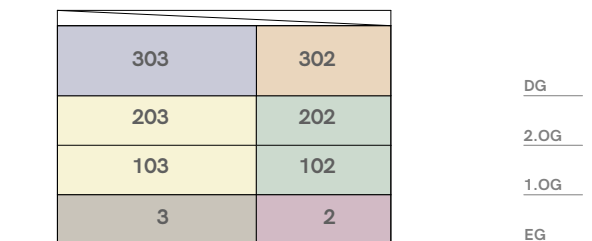
Ansicht Nord



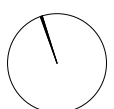
Ansicht Ost



Ansicht Süd



Ansicht West



MFH Neubau + Umbau / Sanierung

Kronenweg 1+3, 8712 Stäfa

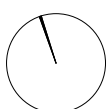
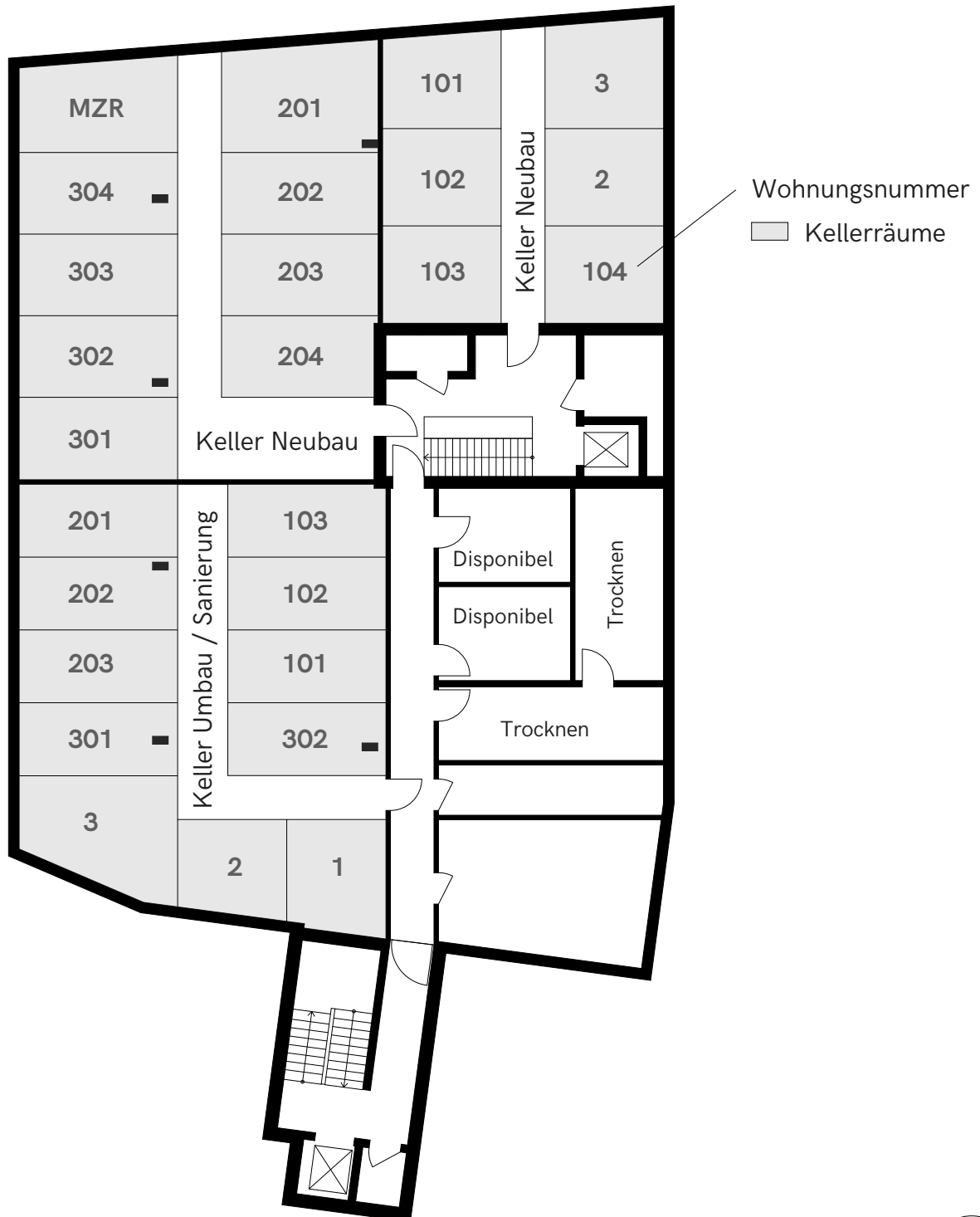
Tiefgarage / Parkplätze
1.Untergeschoss



MFH Neubau + Umbau / Sanierung

Kronenweg 1+3, 8712 Stäfa

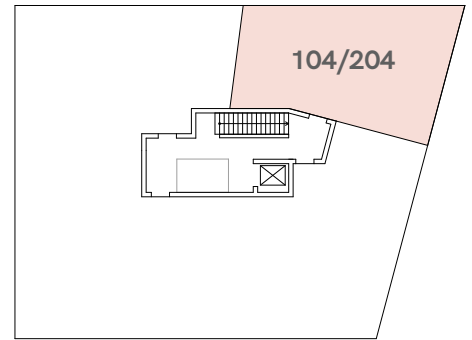
Kellerräume
2. Untergeschoss



MFH Neubau

Kronenweg 3, 8712 Stäfa

Wohnungen 1. + 2.Obergeschoss



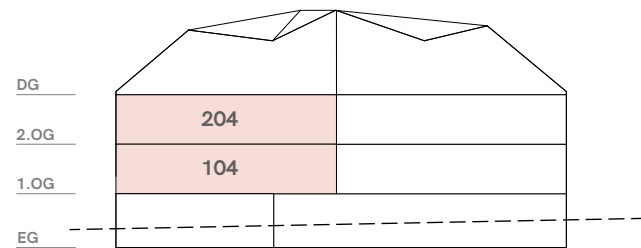
1.OG / 2.OG

2.5 Zi-Whg. 4
1. + 2.Obergeschoss Nord-Ost

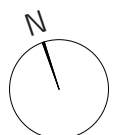
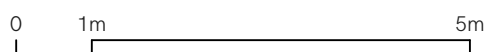
Wohnfläche	58.2m ²
Loggia	7.0m ²
Raumhöhe	2.4m
Keller	11.7m ² /12.69m ²

Änderungen vorbehalten

 Möblierung von den Mietern



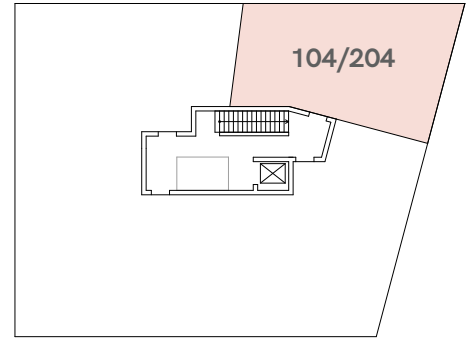
Ansicht Nord



MFH Neubau

Kronenweg 3, 8712 Stäfa

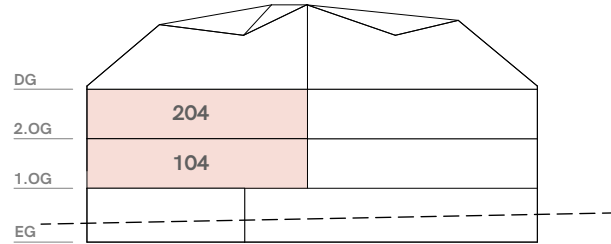
Wohnungen 1. + 2.Obergeschoss



1.OG / 2.OG

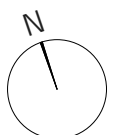
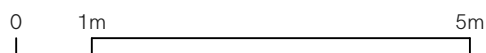
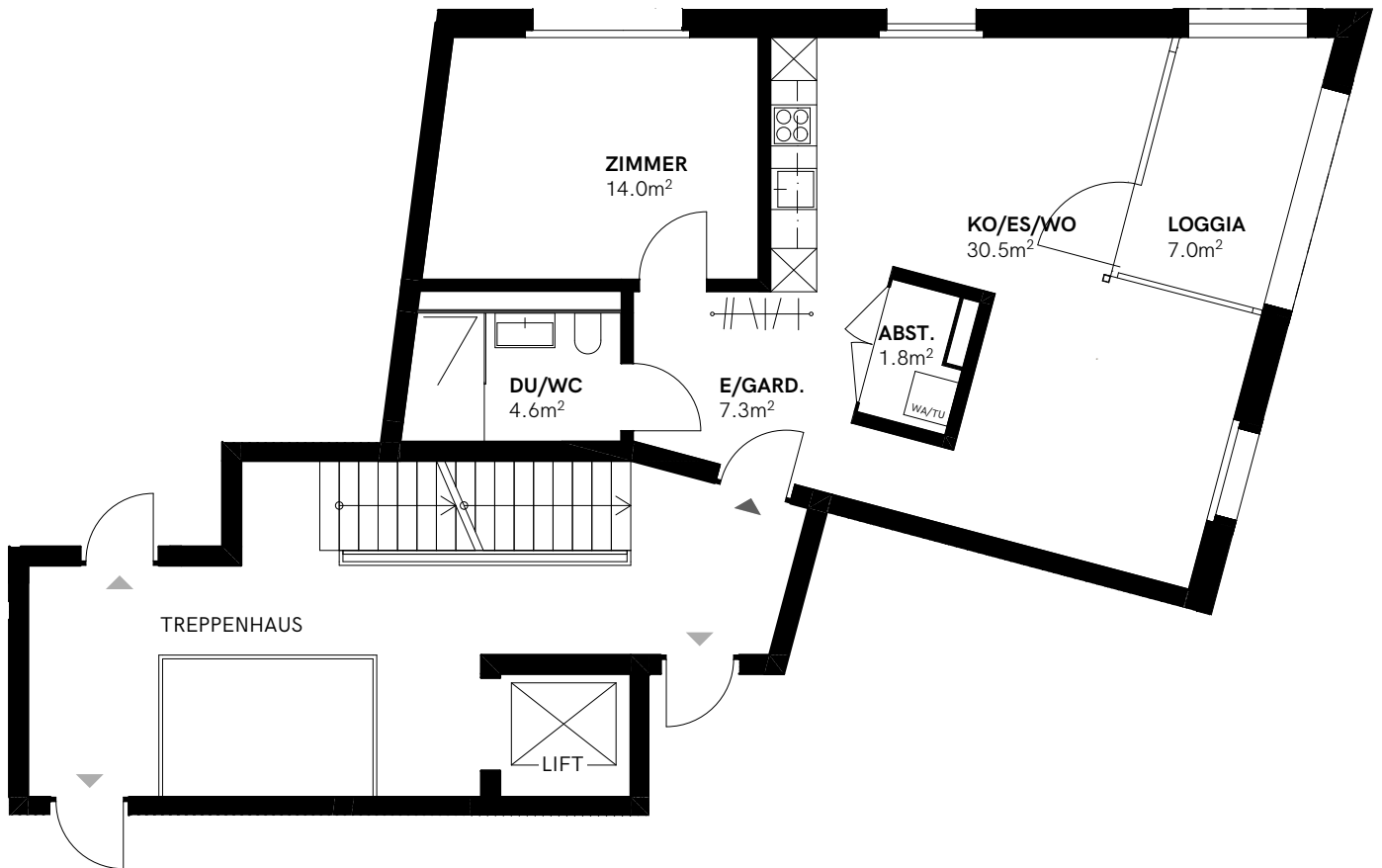
2.5 Zi-Whg. 4
1. + 2.Obergeschoss Nord-Ost

Wohnfläche	58.2m ²
Loggia	7.0m ²
Raumhöhe	2.4m
Keller	11.7m ² /12.6m ²



Ansicht Nord

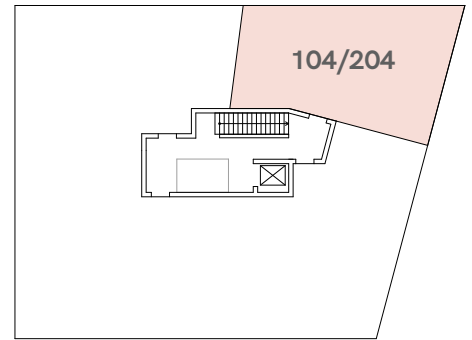
Änderungen vorbehalten



MFH Neubau

Kronenweg 3, 8712 Stäfa

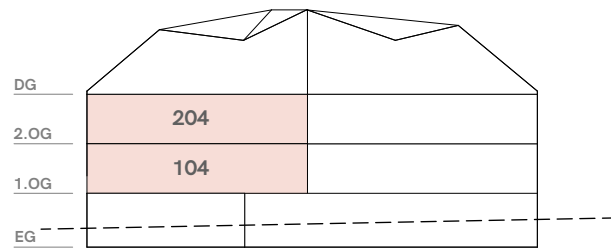
Wohnungen 1. + 2.Obergeschoss



1.OG / 2.OG

2.5 Zi-Whg. 4
1. + 2.Obergeschoss Nord-Ost

Wohnfläche	58.2m ²
Loggia	7.0m ²
Raumhöhe	2.4m
Keller	11.7m ² /12.6m ²



Ansicht Nord

Änderungen vorbehalten

