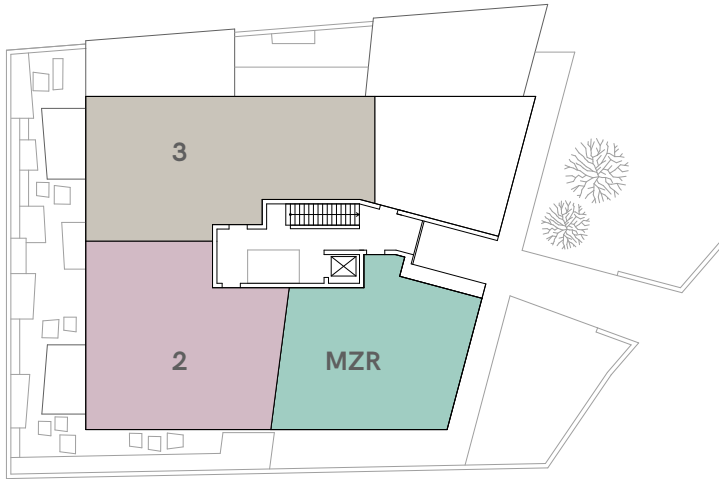


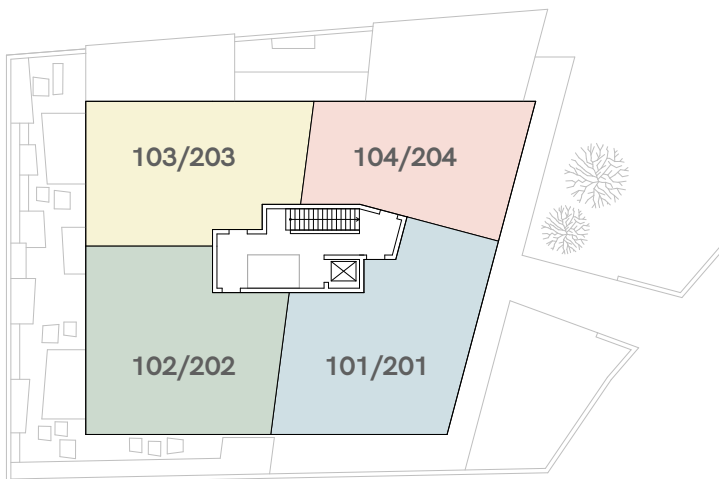
MFH Neubau

Kronenweg 3, 8712 Stäfa

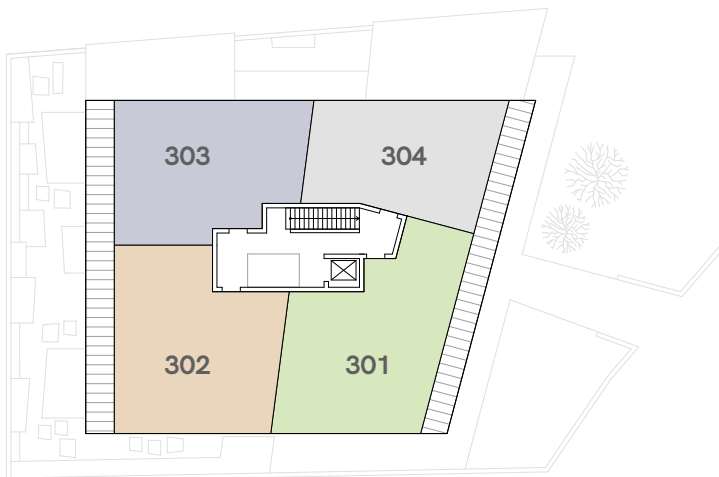
Wohnungen



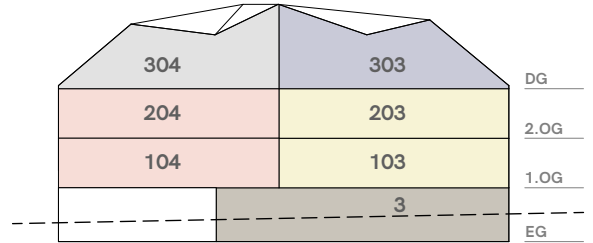
Erdgeschoss



1. + 2. Obergeschoss



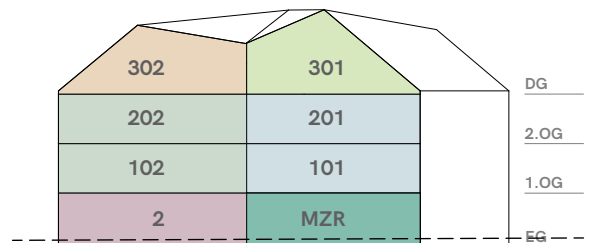
Dachgeschoss



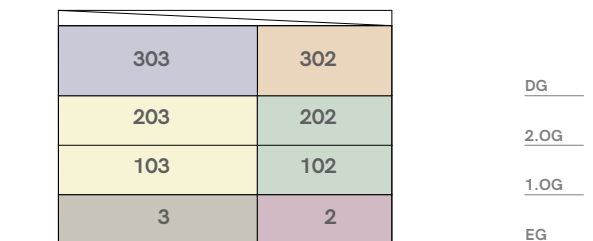
Ansicht Nord



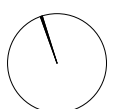
Ansicht Ost



Ansicht Süd



Ansicht West



MFH Neubau + Umbau / Sanierung

Kronenweg 1+3, 8712 Stäfa

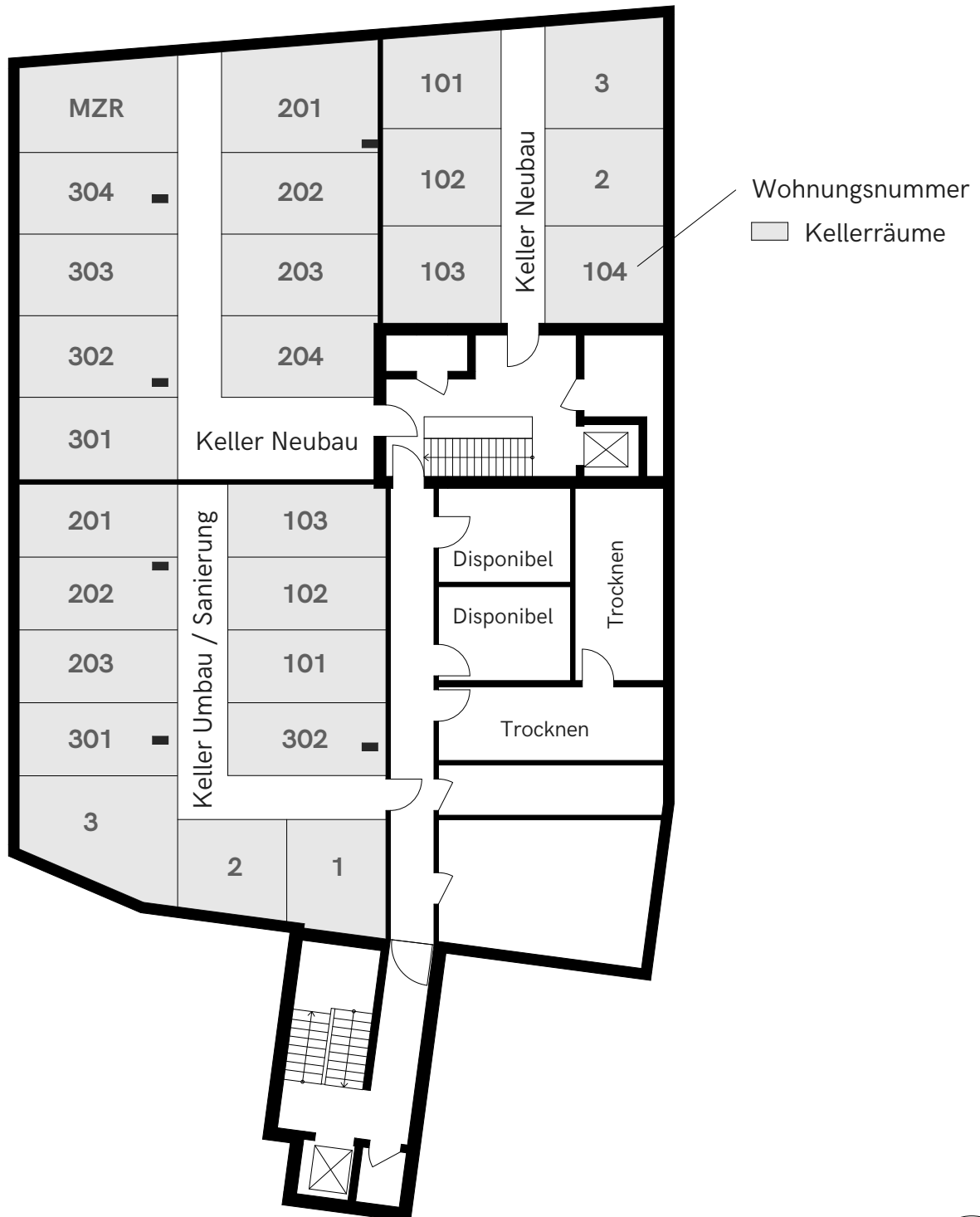
Tiefgarage / Parkplätze
1.Untergeschoss



MFH Neubau + Umbau / Sanierung

Kronenweg 1+3, 8712 Stäfa

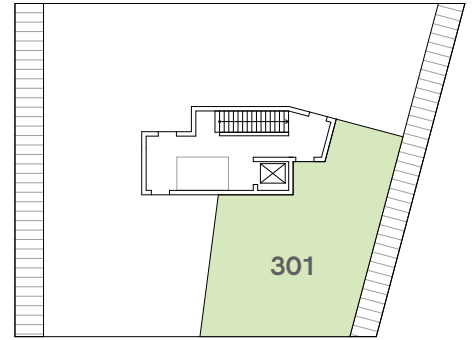
Kellerräume
2. Untergeschoss



MFH Neubau

Kronenweg 3, 8712 Stäfa

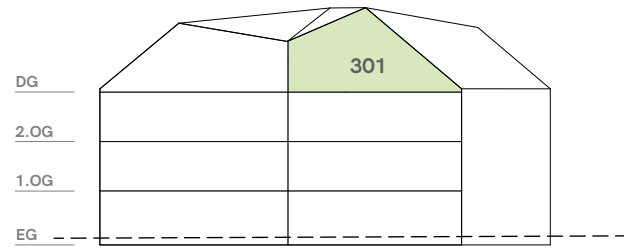
Wohnungen Dachgeschoss



DG

2.5 Zi-Whg. 1
Dachgeschoss Süd-Ost

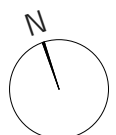
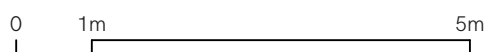
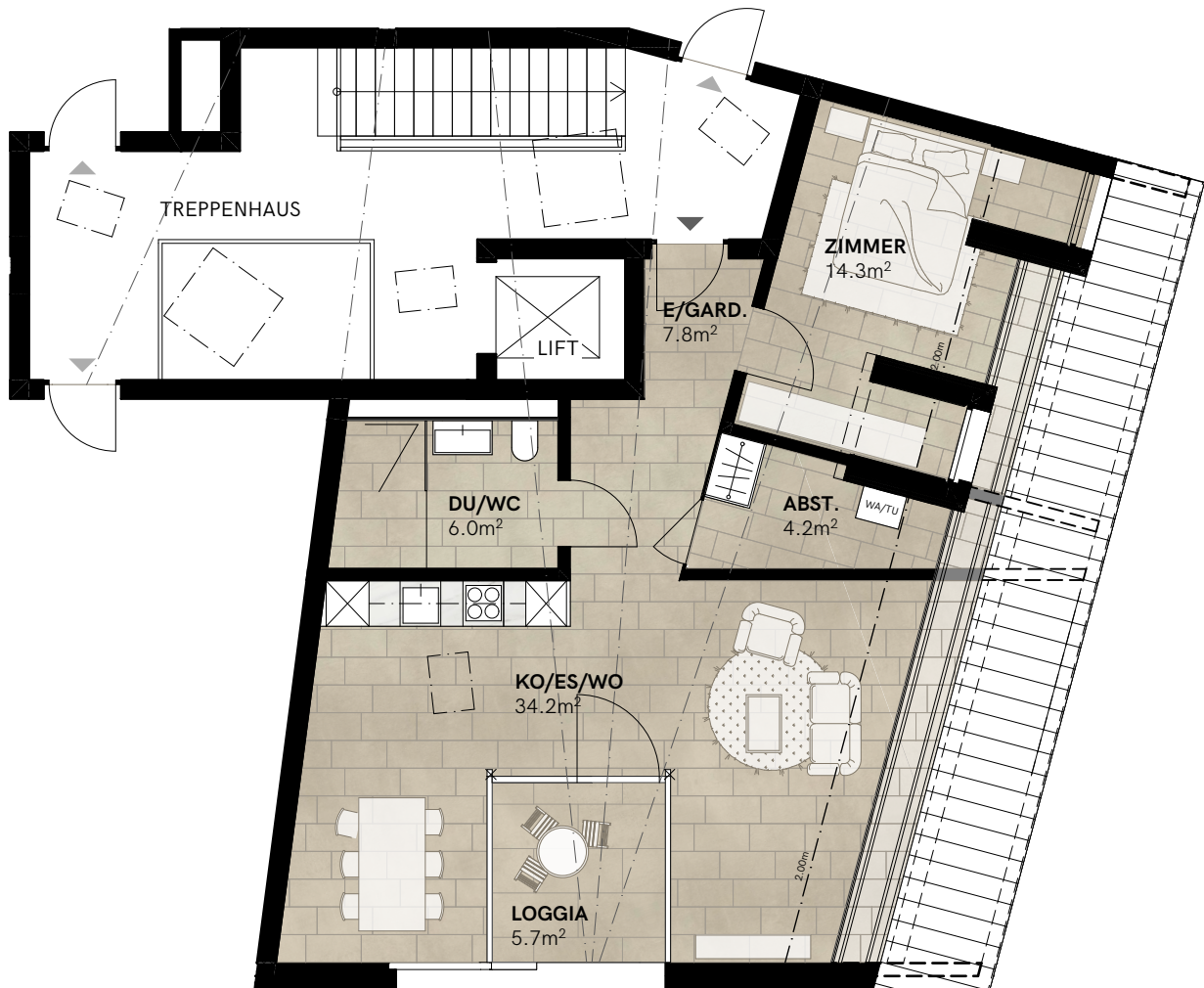
Wohnfläche	66.5m ²
Loggia	5.7m ²
Raumhöhe	Var.
Keller	13.2m ²



Ansicht Süd

Änderungen vorbehalten

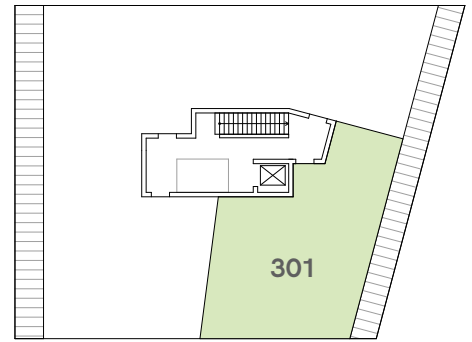
Möblierung von den Mietern



MFH Neubau

Kronenweg 3, 8712 Stäfa

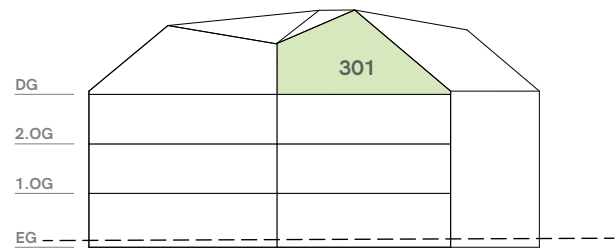
Wohnungen Dachgeschoss



DG

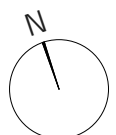
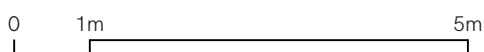
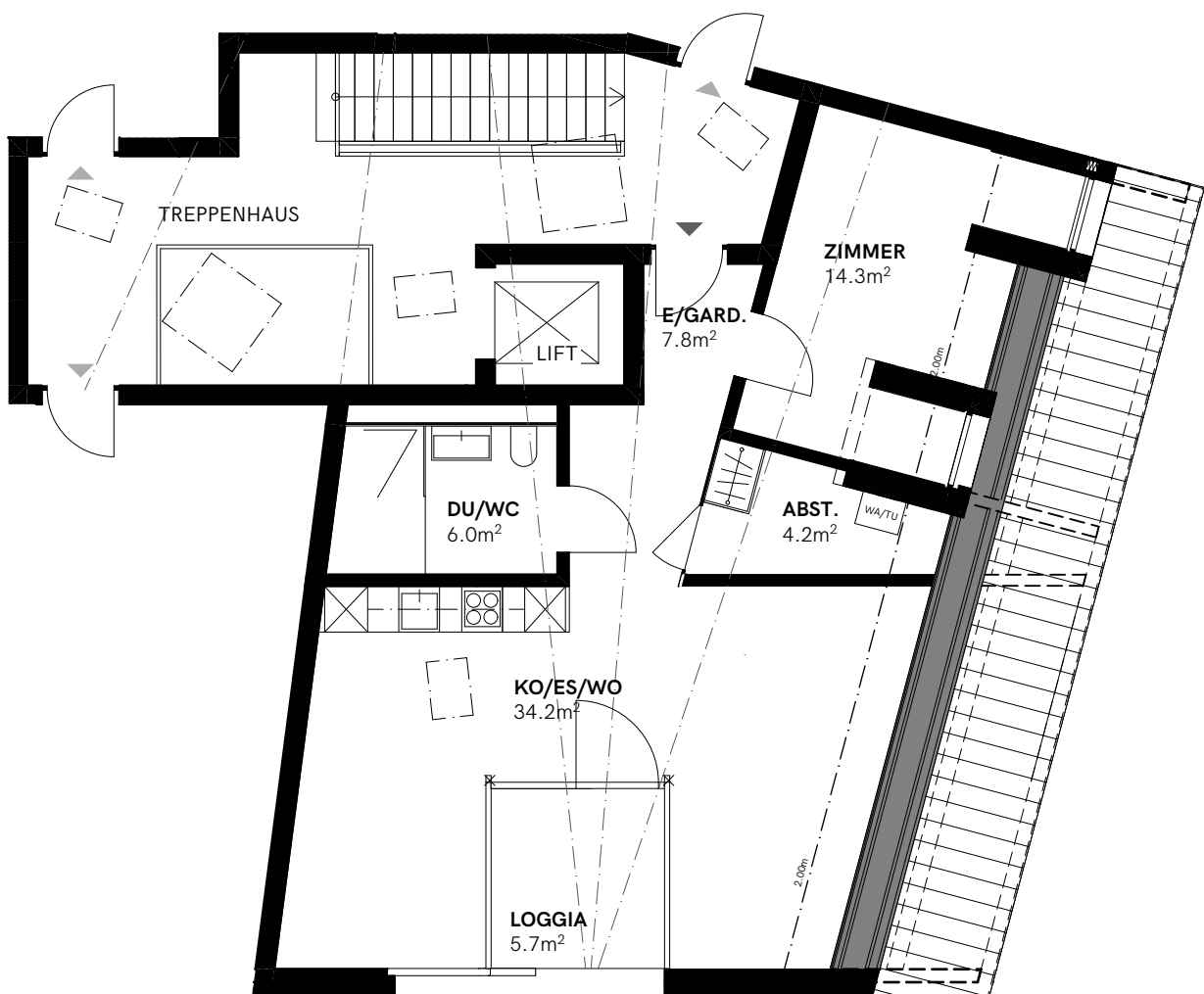
2.5 Zi-Whg. 1
Dachgeschoss Süd-Ost

Wohnfläche	66.5m ²
Loggia	5.7m ²
Raumhöhe	Var.
Keller	13.2m ²



Ansicht Süd

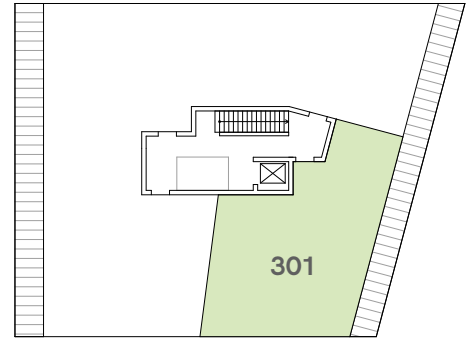
Änderungen vorbehalten



MFH Neubau

Kronenweg 3, 8712 Stäfa

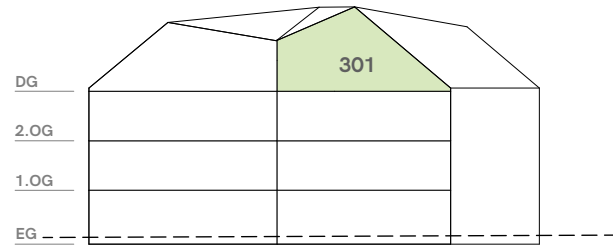
Wohnungen Dachgeschoss



DG

2.5 Zi-Whg. 1
Dachgeschoss Süd-Ost

Wohnfläche	66.5m ²
Loggia	5.7m ²
Raumhöhe	Var.
Keller	13.2m ²



Ansicht Süd

Änderungen vorbehalten

