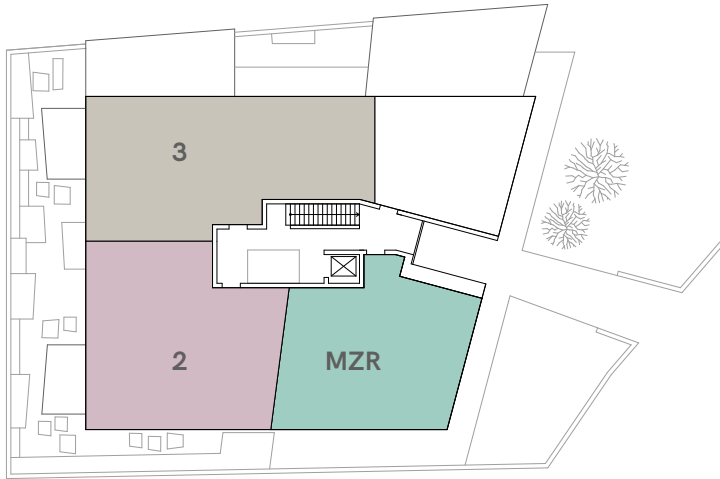


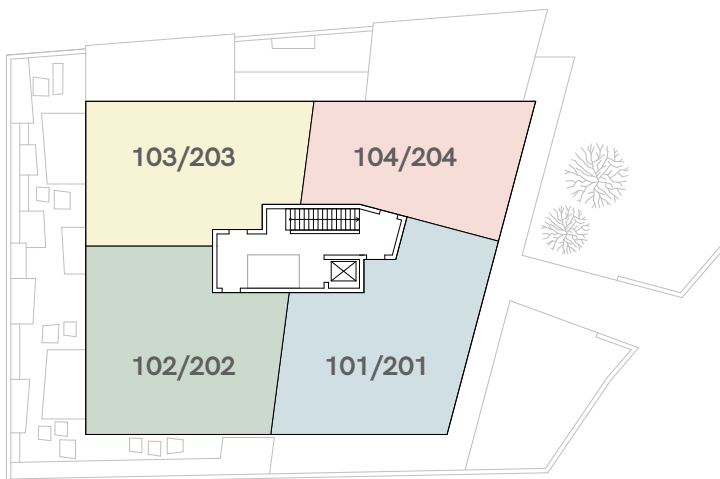
# MFH Neubau

## Kronenweg 3, 8712 Stäfa

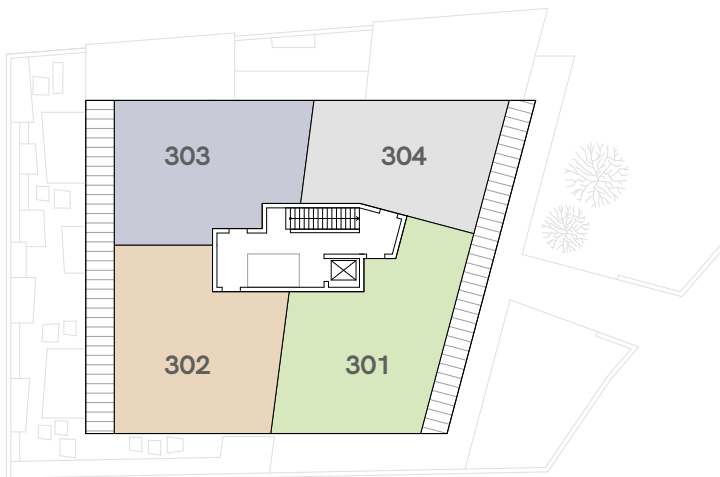
### Wohnungen



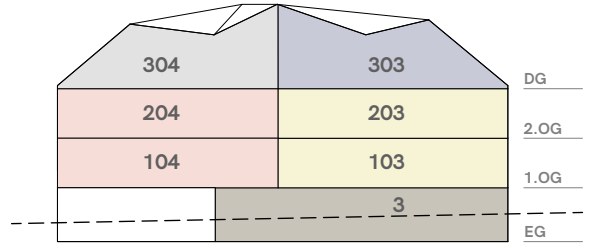
Erdgeschoss



1. + 2. Obergeschoss



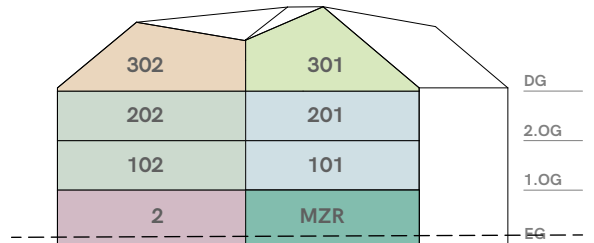
Dachgeschoss



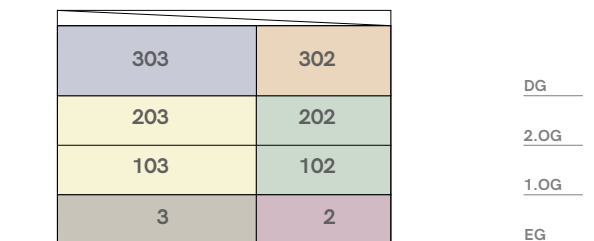
Ansicht Nord



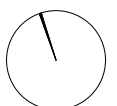
Ansicht Ost



Ansicht Süd



Ansicht West



# MFH Neubau + Umbau / Sanierung Kronenweg 1+3, 8712 Stäfa

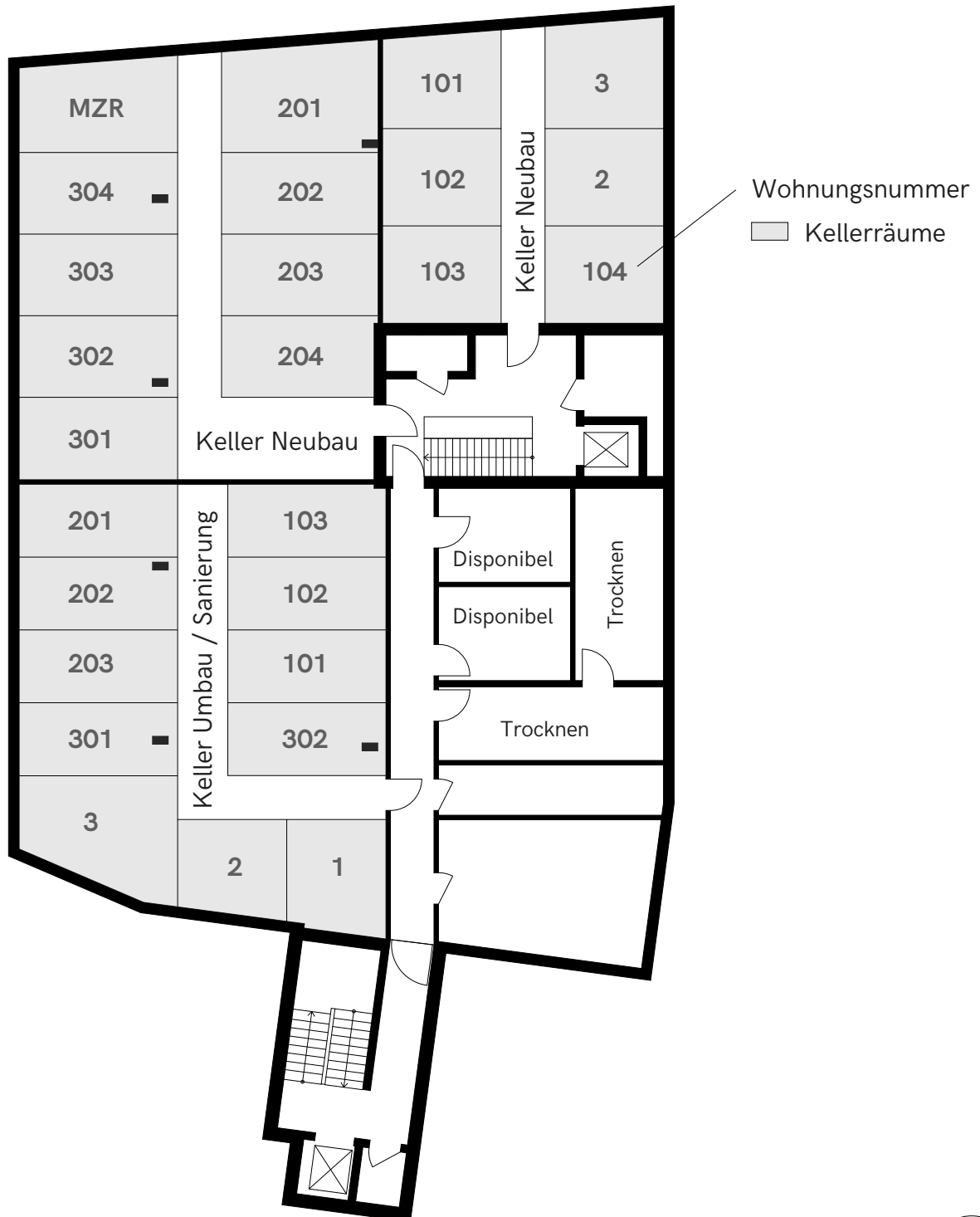
Tiefgarage / Parkplätze  
1.Untergeschoss



# MFH Neubau + Umbau / Sanierung

## Kronenweg 1+3, 8712 Stäfa

Kellerräume  
2. Untergeschoss



# MFH Neubau


## Kronenweg 3, 8712 Stäfa

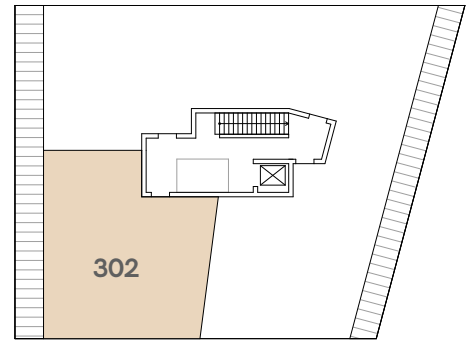
Wohnungen Dachgeschoss

2.5 Zi-Whg. 2  
Dachgeschoss Süd-West

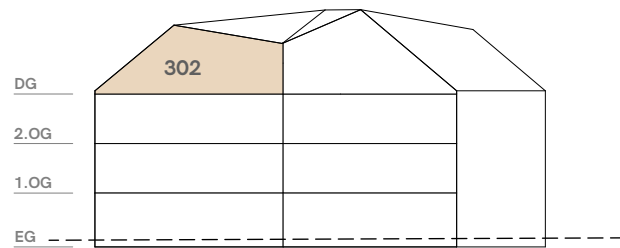
Wohnfläche	64.6m <sup>2</sup>
Loggia	5.7m <sup>2</sup>
Raumhöhe	Var.
Keller	13.1m <sup>2</sup>

Änderungen vorbehalten

 Möblierung von den Mietern



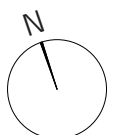
DG



Ansicht Süd



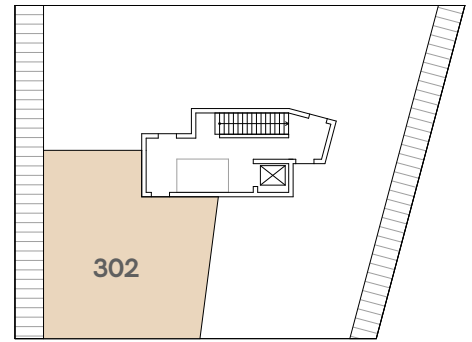
0 1m 5m



# MFH Neubau

## Kronenweg 3, 8712 Stäfa

Wohnungen Dachgeschoss

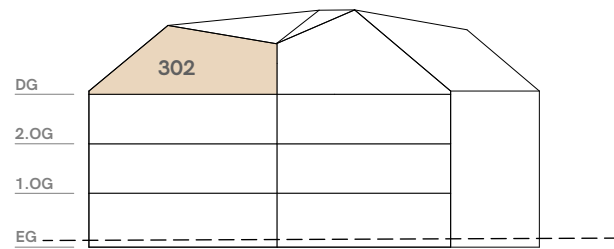


DG

### 2.5 Zi-Whg. 2

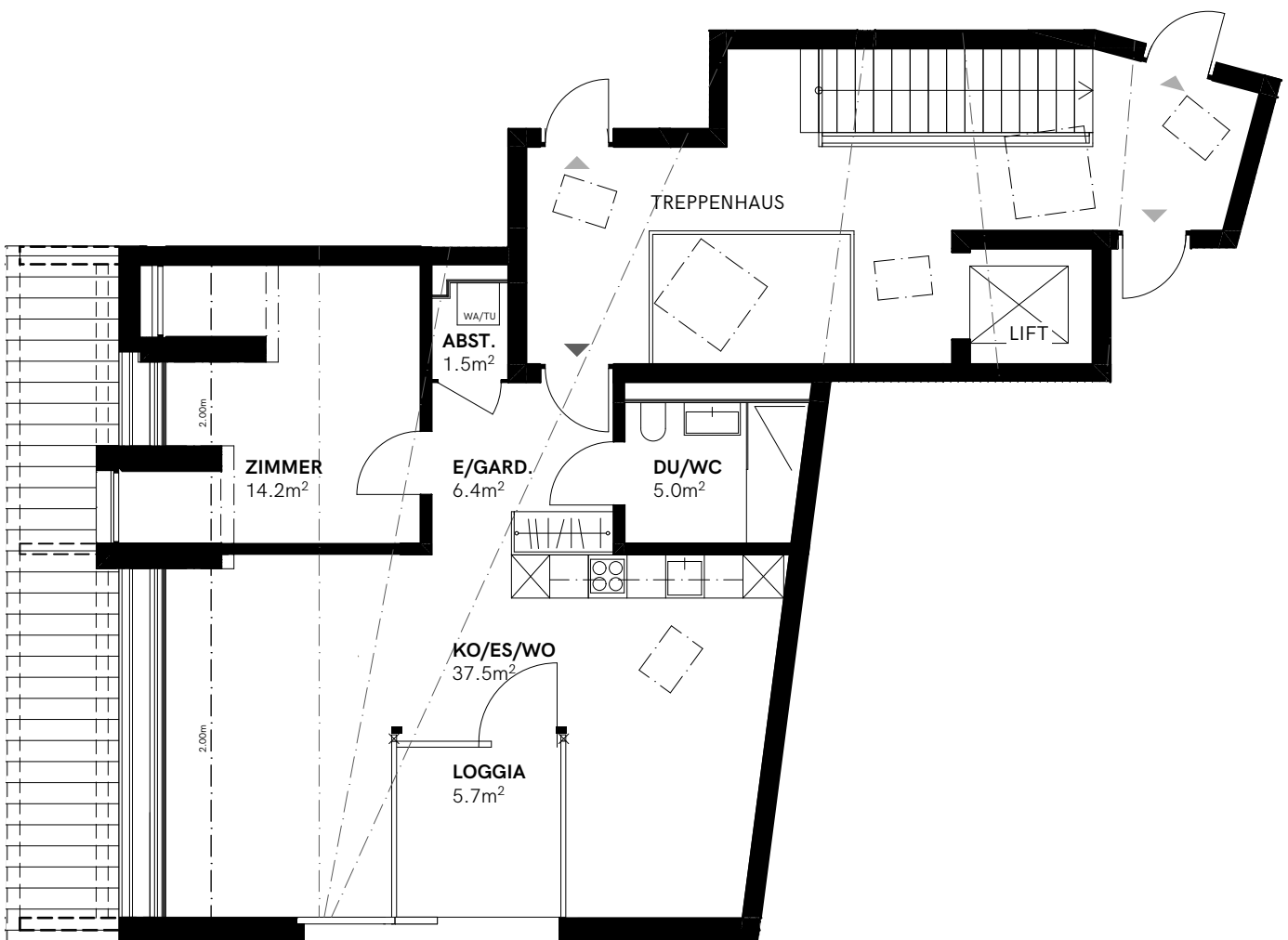
Dachgeschoss Süd-West

Wohnfläche	64.6m <sup>2</sup>
Loggia	5.7m <sup>2</sup>
Raumhöhe	Var.
Keller	13.1m <sup>2</sup>

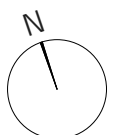


Ansicht Süd

Änderungen vorbehalten



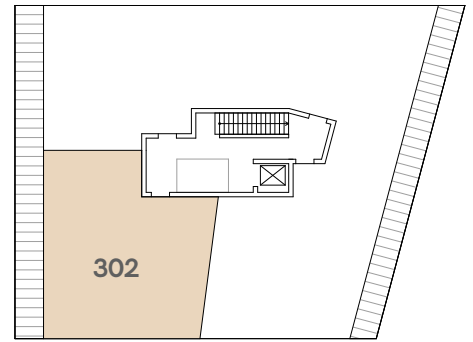
0 1m 5m



# MFH Neubau

## Kronenweg 1, 8712 Stäfa

Wohnungen Dachgeschoss



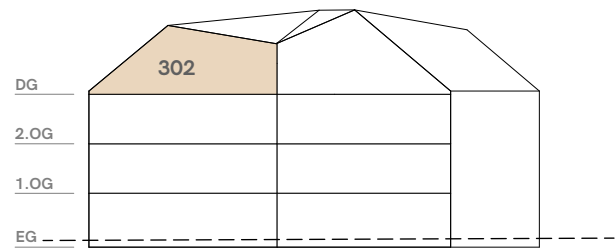
DG

### 2.5 Zi-Whg. 2

Dachgeschoss Süd-West

Wohnfläche	64.6m <sup>2</sup>
Loggia	5.7m <sup>2</sup>
Raumhöhe	Var.
Keller	13.1m <sup>2</sup>

Änderungen vorbehalten



Ansicht Süd

