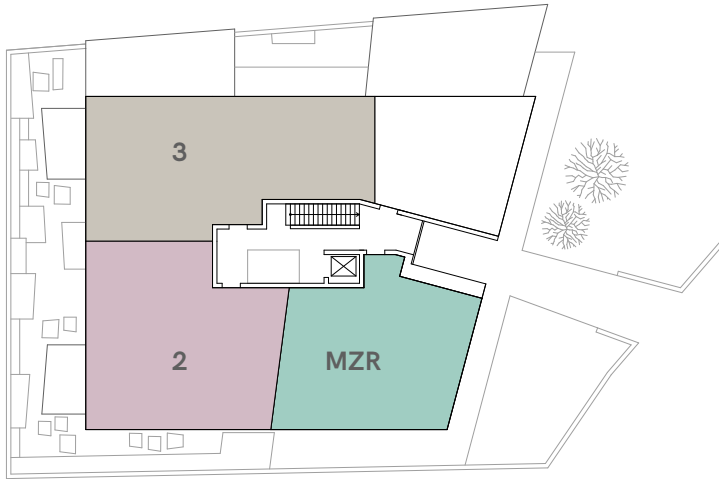


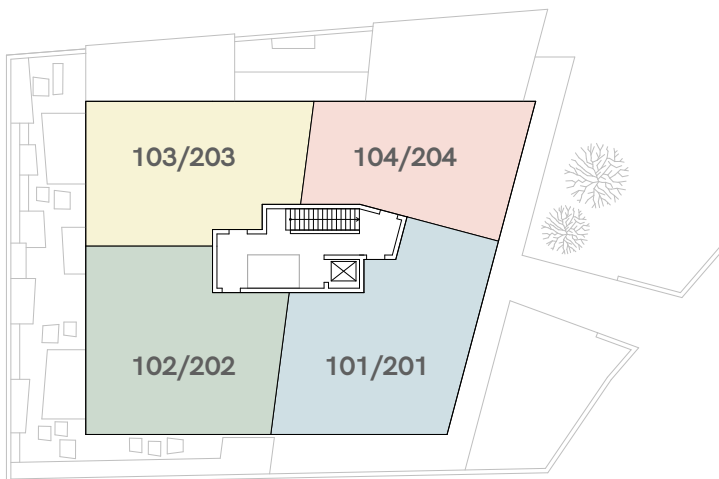
MFH Neubau

Kronenweg 3, 8712 Stäfa

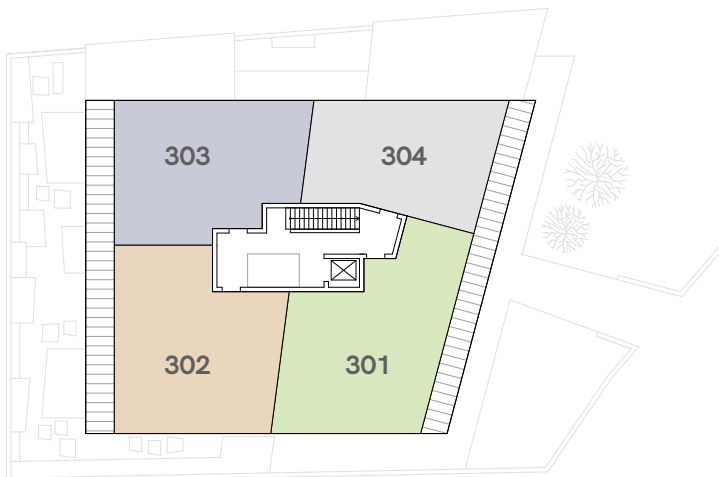
Wohnungen



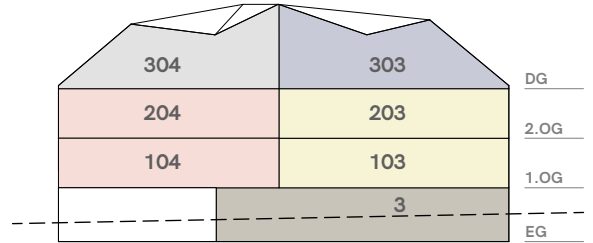
Erdgeschoss



1. + 2. Obergeschoss



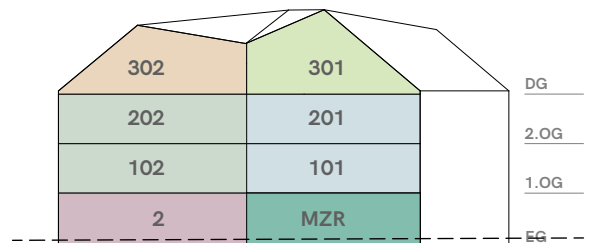
Dachgeschoss



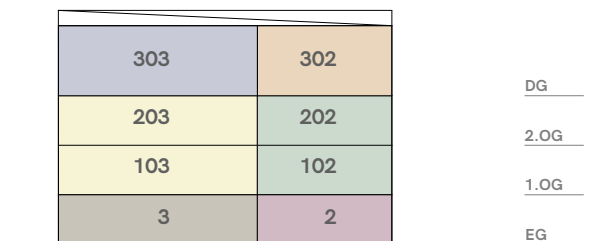
Ansicht Nord



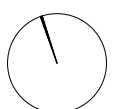
Ansicht Ost



Ansicht Süd



Ansicht West



MFH Neubau + Umbau / Sanierung

Kronenweg 1+3, 8712 Stäfa

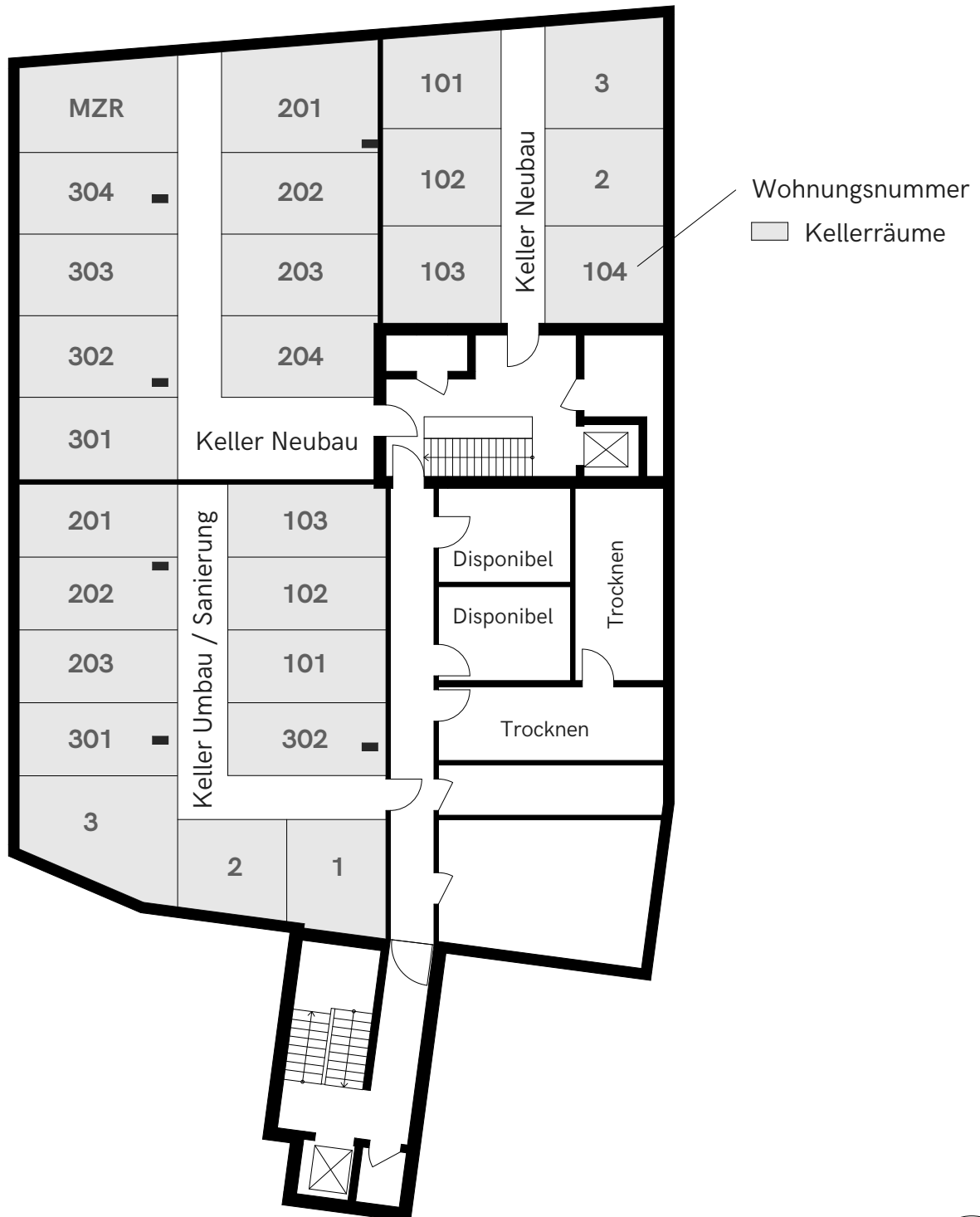
Tiefgarage / Parkplätze
1.Untergeschoss



MFH Neubau + Umbau / Sanierung

Kronenweg 1+3, 8712 Stäfa

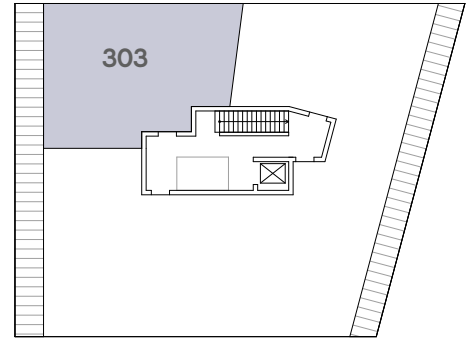
Kellerräume
2. Untergeschoss



MFH Neubau

Kronenweg 3, 8712 Stäfa

Wohnungen Dachgeschoss




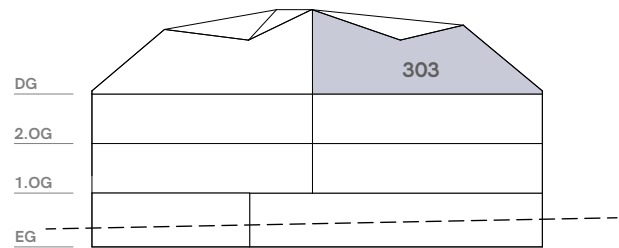
DG

2.5 Zi-Whg. 3
Dachgeschoss Nord-West

Wohnfläche	62.7m ²
Loggia	6.3m ²
Raumhöhe	Var.
Keller	13.1m ²

Änderungen vorbehalten

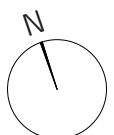
 Möblierung von den Mietern



Ansicht Nord



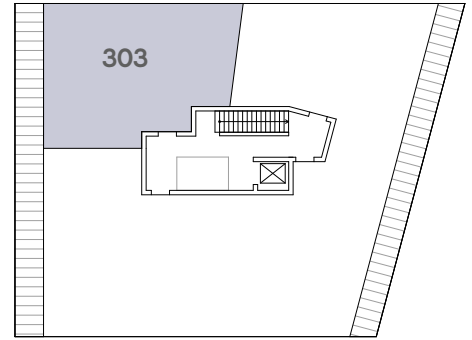
0 1m 5m



MFH Neubau

Kronenweg 3, 8712 Stäfa

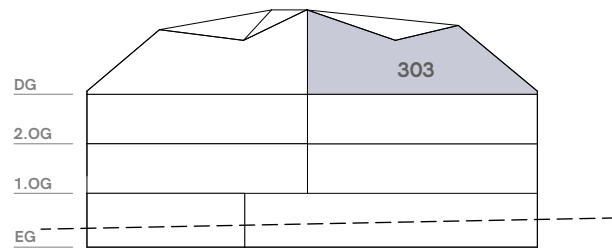
Wohnungen Dachgeschoss



DG

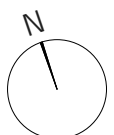
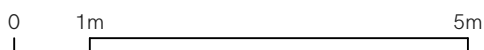
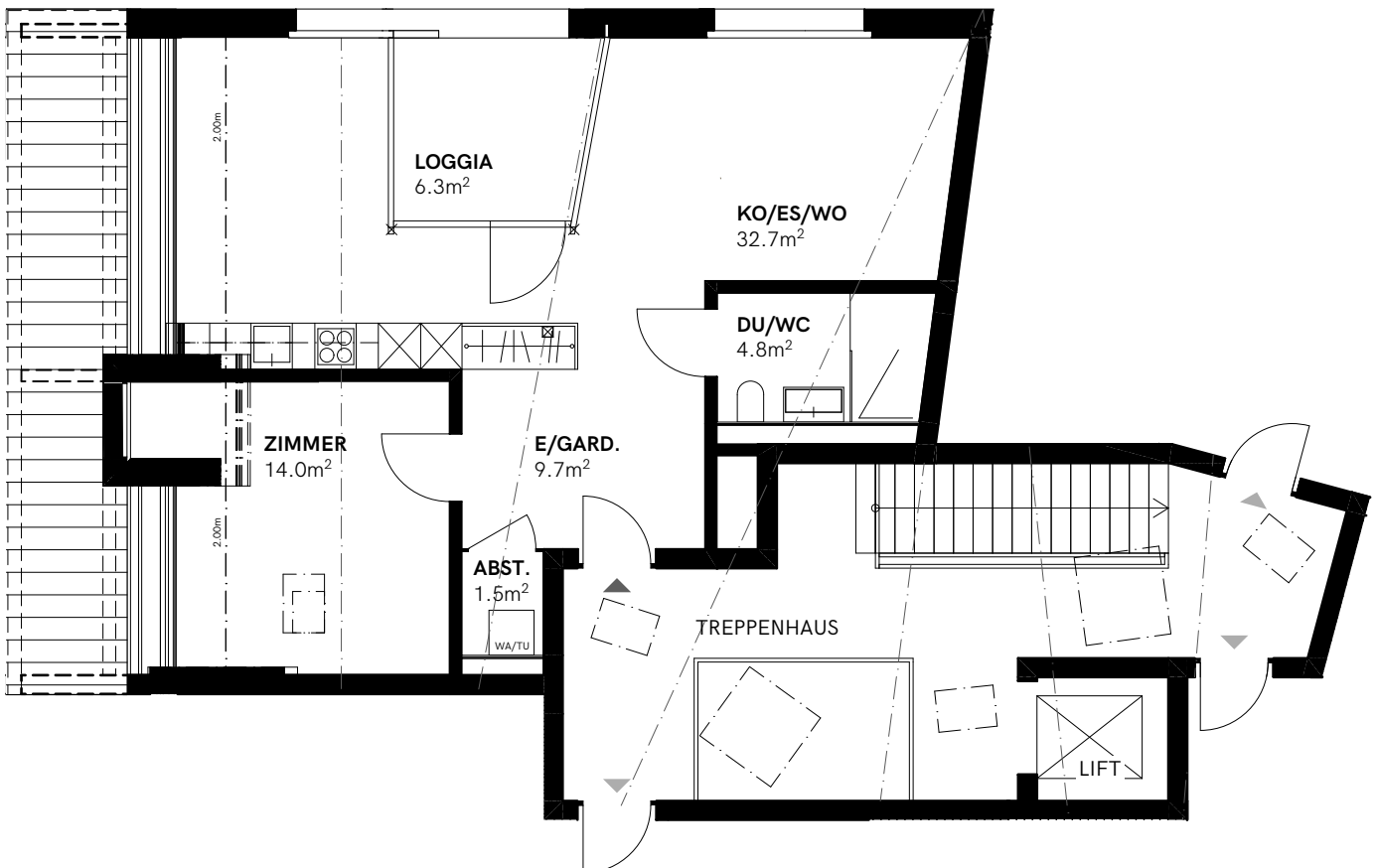
2.5 Zi-Whg. 3
Dachgeschoss Nord-West

Wohnfläche	62.7m ²
Loggia	6.3m ²
Raumhöhe	Var.
Keller	13.1m ²



Ansicht Nord

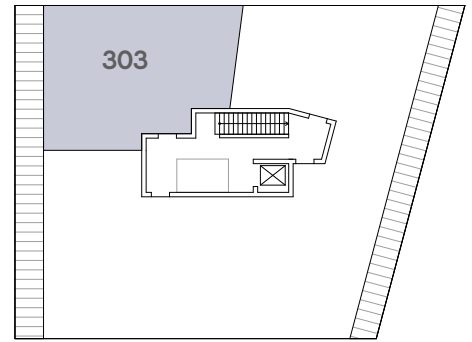
Änderungen vorbehalten



MFH Neubau

Kronenweg 3, 8712 Stäfa

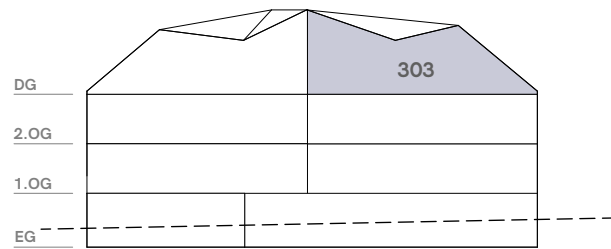
Wohnungen Dachgeschoss



DG

2.5 Zi-Whg. 3
Dachgeschoss Nord-West

Wohnfläche	62.7m ²
Loggia	6.3m ²
Raumhöhe	Var.
Keller	13.1m ²



Ansicht Nord

Änderungen vorbehalten

