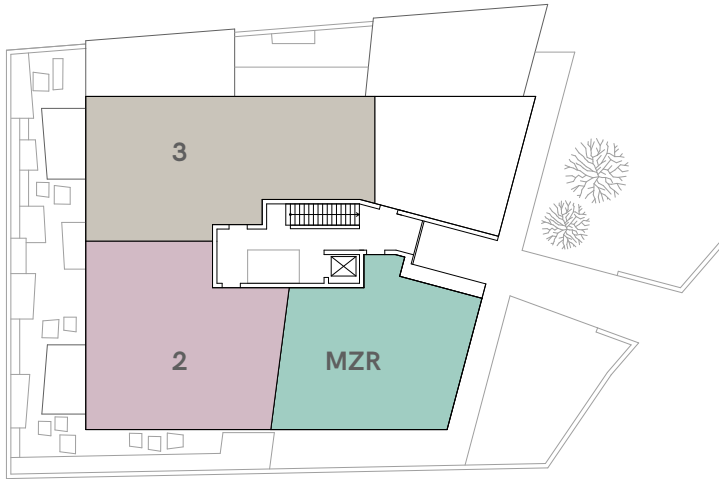


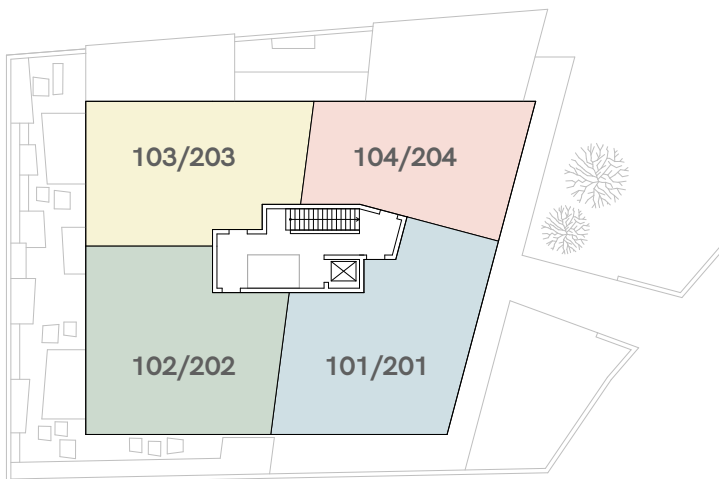
MFH Neubau

Kronenweg 3, 8712 Stäfa

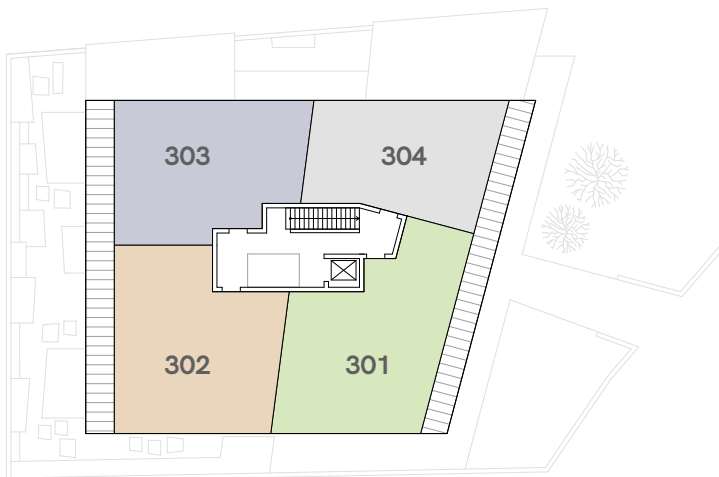
Wohnungen



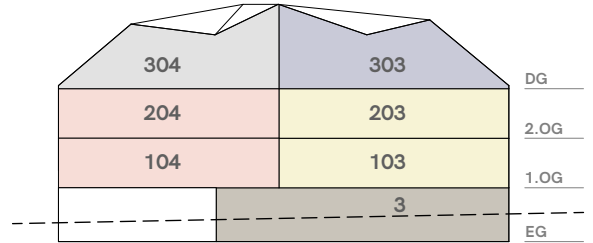
Erdgeschoss



1. + 2. Obergeschoss



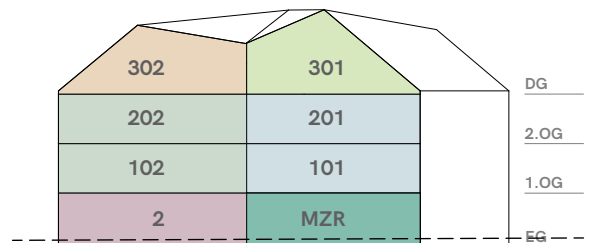
Dachgeschoss



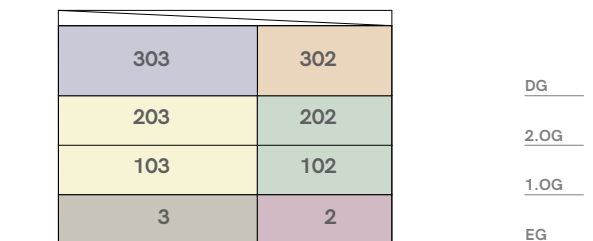
Ansicht Nord



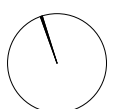
Ansicht Ost



Ansicht Süd



Ansicht West



MFH Neubau + Umbau / Sanierung

Kronenweg 1+3, 8712 Stäfa

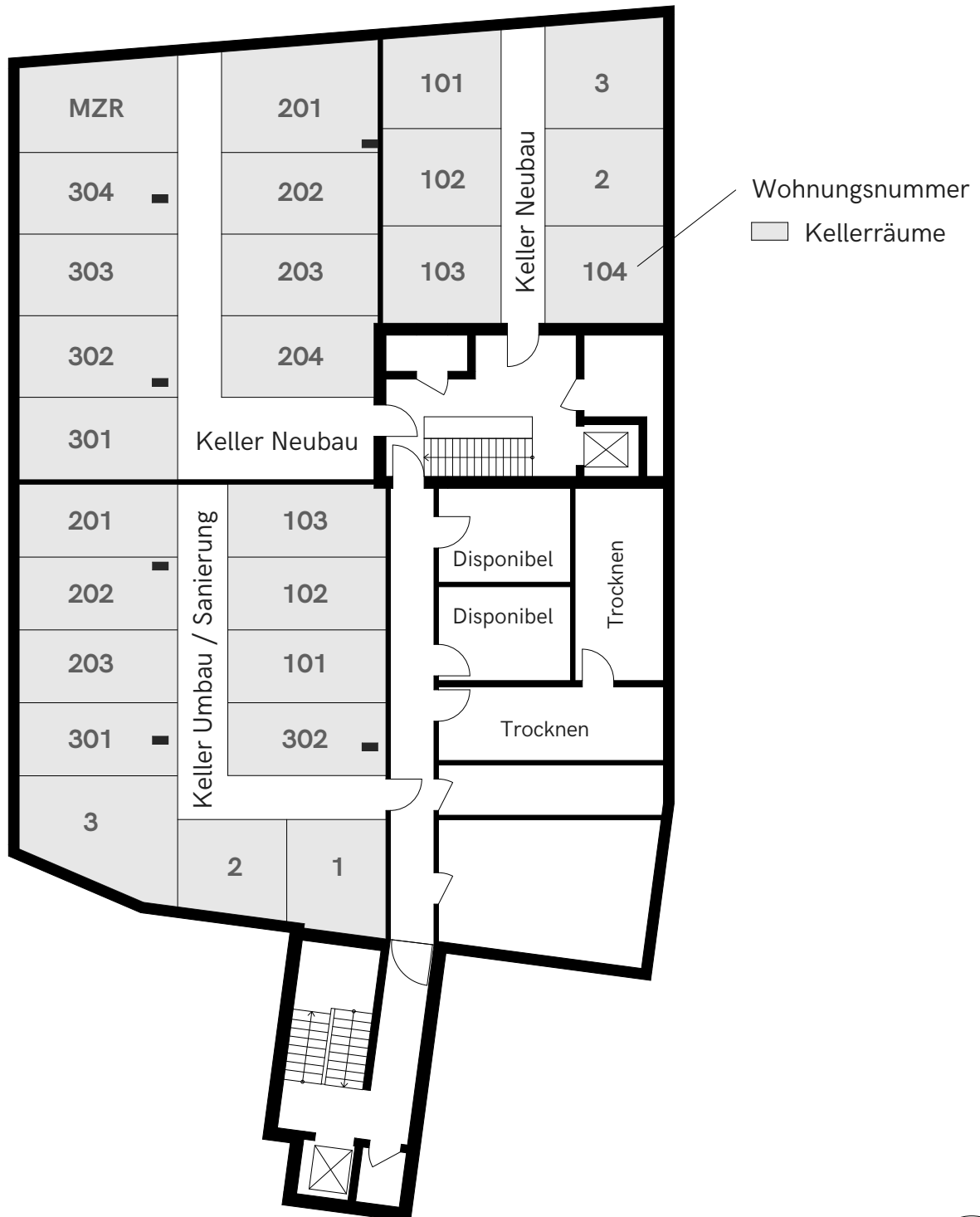
Tiefgarage / Parkplätze
1.Untergeschoss



MFH Neubau + Umbau / Sanierung

Kronenweg 1+3, 8712 Stäfa

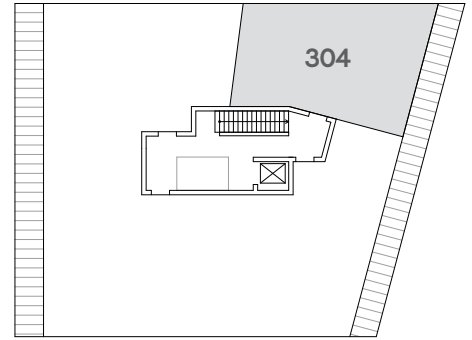
Kellerräume
2. Untergeschoss



MFH Neubau

Kronenweg 3, 8712 Stäfa

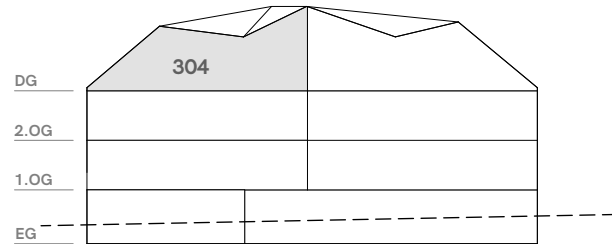
Wohnungen Dachgeschoss



DG


1.5 Zi-Whg.4
Dachgeschoss Nord-Ost

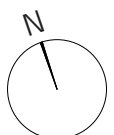
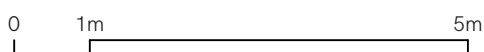
Wohnfläche	49.1m ²
Loggia	4.7m ²
Raumhöhe	Var.
Keller	13.1m ²



Ansicht Nord

Änderungen vorbehalten

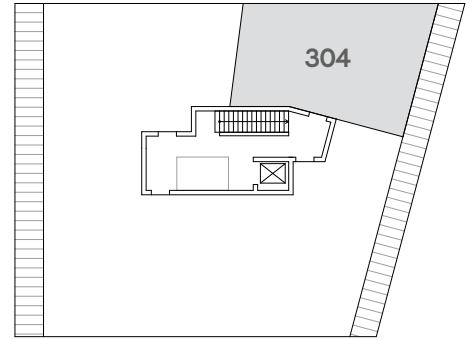
 Möblierung von den Mietern



MFH Neubau

Kronenweg 3, 8712 Stäfa

Wohnungen Dachgeschoss

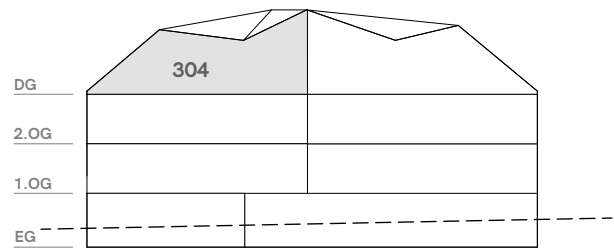


DG

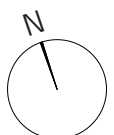
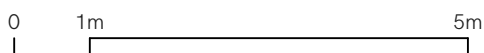
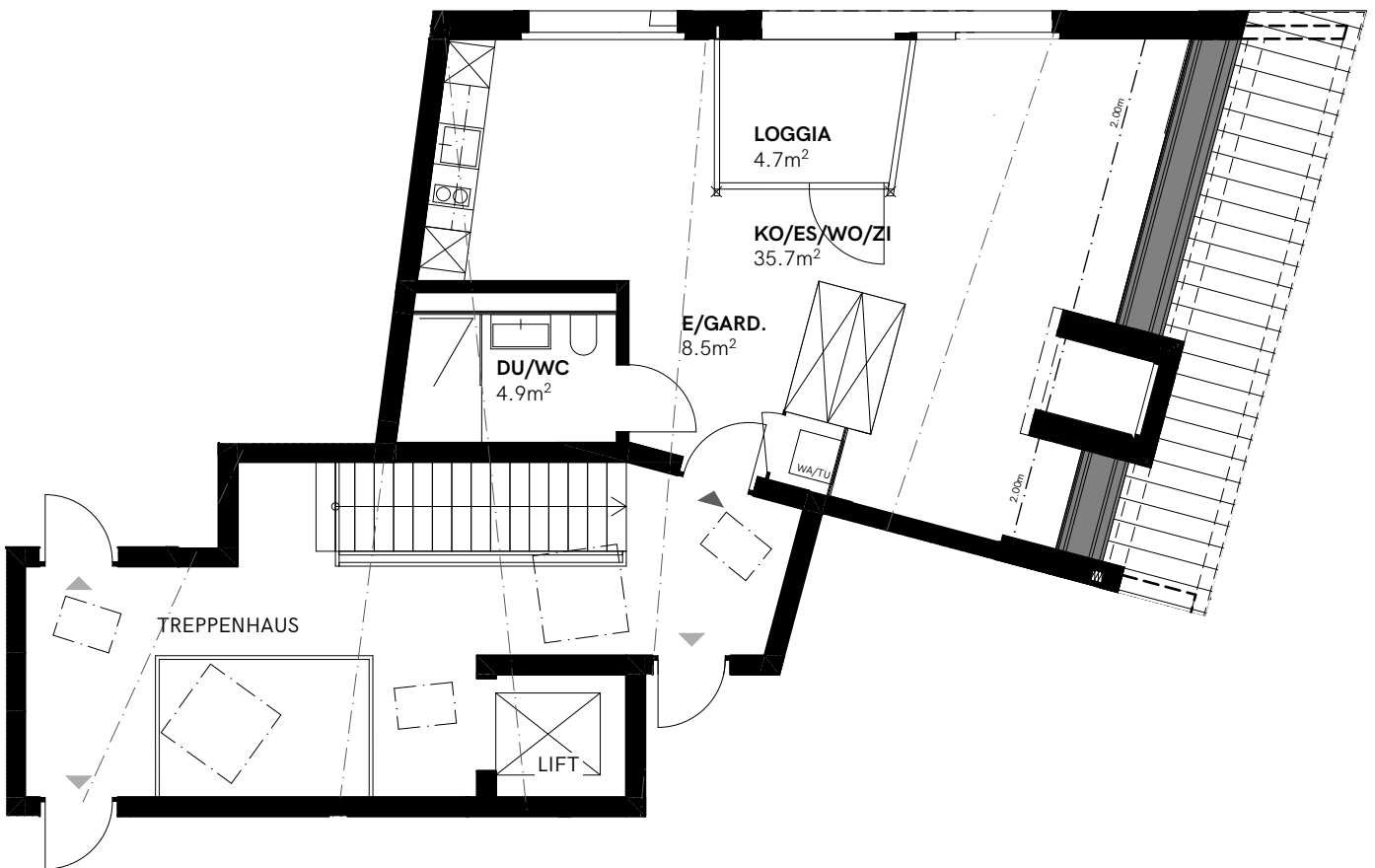
1.5 Zi-Whg.4
Dachgeschoss Nord-Ost

Wohnfläche	49.1m ²
Loggia	4.7m ²
Raumhöhe	Var.
Keller	13.1m ²

Änderungen vorbehalten



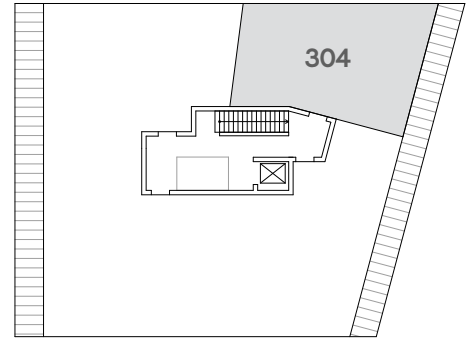
Ansicht Nord



MFH Neubau

Kronenweg 3, 8712 Stäfa

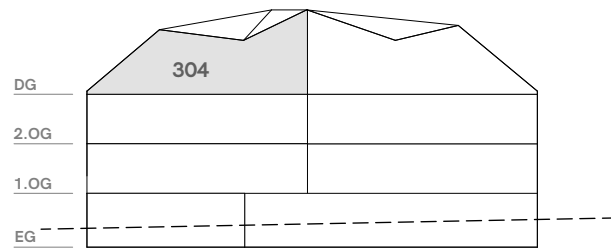
Wohnungen Dachgeschoss



DG

1.5 Zi-Whg.4
Dachgeschoss Nord-Ost

Wohnfläche	49.1m ²
Loggia	4.7m ²
Raumhöhe	Var.
Keller	13.1m ²



Ansicht Nord

Änderungen vorbehalten

